

MATERIALS & FINISHES



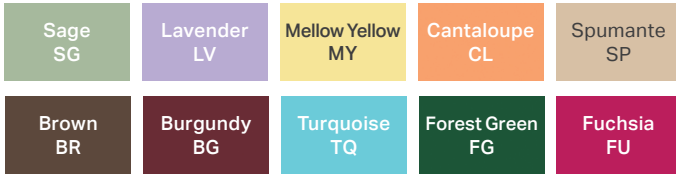
Premier™ Series Seating

STANDARD SEAT COLORS

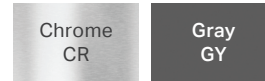


SPECIAL ORDER SEAT COLORS

(Minimum order quantities of 500 and a 12 week lead-time.)



FRAME COLORS



Apex™ Series Seating

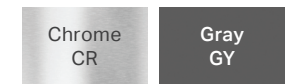
STANDARD SEAT COLORS



SPECIAL ORDER SEAT COLORS (Minimum order quantity of 500 and a 12 week lead-time.)



FRAME COLORS

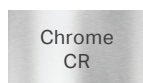


MG1101 Series Seating

SEAT COLORS



FRAME COLOR

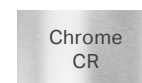


Nova Series Seating

SEAT COLORS



FRAME COLOR



Not all colors are available for every model. Please refer to each model description to see available color options and note shipping lead-times for specific colors, quantities and models. Due to pattern scale and color variations in computer monitors and printers, we recommend you view actual samples before making surface material selections.

Worksurface Laminates with Edge Band Options

STANDARD LAMINATES (All available with matching edge band except Gray Nebula. Colored edge band options shown here with color codes.)

Fusion Maple	Black	50
	Gray	61
	Navy	F9
	Blue	62
	Blueberry	G2
	Apple	G1
	Red	63
	Orange	M8
Purple	N6	

Gray Nebula	Black	77
	Gray	78
	Navy	F3
	Blue	F4
	Blueberry	F7
	Apple	F5
	Red	F6
	Orange	N1
Purple	N7	

Veranda Teak	Black	P7
	Gray	P8
	Navy	P9
	Blue	Q1
	Blueberry	Q2
	Apple	Q3
	Red	Q4
	Orange	Q5
Purple	Q6	

Solar Oak	Black	49
	Gray	G4
	Navy	G5
	Blue	G6
	Blueberry	G8
	Apple	G7
	Red	70
	Orange	M6
Purple	N4	

Wild Cherry	Black	60
	Gray	H1
	Navy	H2
	Blue	H3
	Blueberry	H6
	Apple	H4
	Red	H5
	Orange	M7
Purple	N5	

Boardwalk Oak	Black	K8
	Gray	K9
	Navy	L1
	Blue	L2
	Blueberry	L5
	Apple	L3
	Red	L4
	Orange	L6
Purple	P1	

Asian Night	Black	J9
	Gray	K1
	Navy	K2
	Blue	K3
	Blueberry	K6
	Apple	K4
	Red	K5
	Orange	K7
Purple	N9	

Pewter Mesh	Black	J1
	Gray	J2
	Navy	J3
	Blue	J4
	Blueberry	J7
	Apple	J5
	Red	J6
	Orange	J8
Purple	P2	

High Rise	Black	U4
	Gray	U5
	Navy	U6
	Blue	U7
	Blueberry	U8
	Apple	U9
	Red	V1
	Orange	V2
Purple	V3	

New Age Oak	Black	T2
	Gray	T3
	Navy	T4
	Blue	T5
	Blueberry	T6
	Apple	T7
	Red	T8
	Orange	T9
Purple	U1	

High Pressure Laminate available upon request. Must order a minimum of 25 units in the same color.

DRY ERASE LAMINATES WITH EDGE BANDING

White Dry Erase (HPL) (Includes Upcharge)	Black	22
	Gray	23
	Navy	25
	Blue	26
	Blueberry	29
	Apple	27
	Red	28
	Orange	B2
Purple	B3	

Glacier White	Black	C6
	Gray	C5
Evergreen Mist	Black	D1
	Gray	C9

Insipid	Black	D5
	Gray	D4
Ocean	Black	C4
	Gray	C3

Mirage	Black	D3
	Gray	D2
Tsunami	Black	C8
	Gray	C7

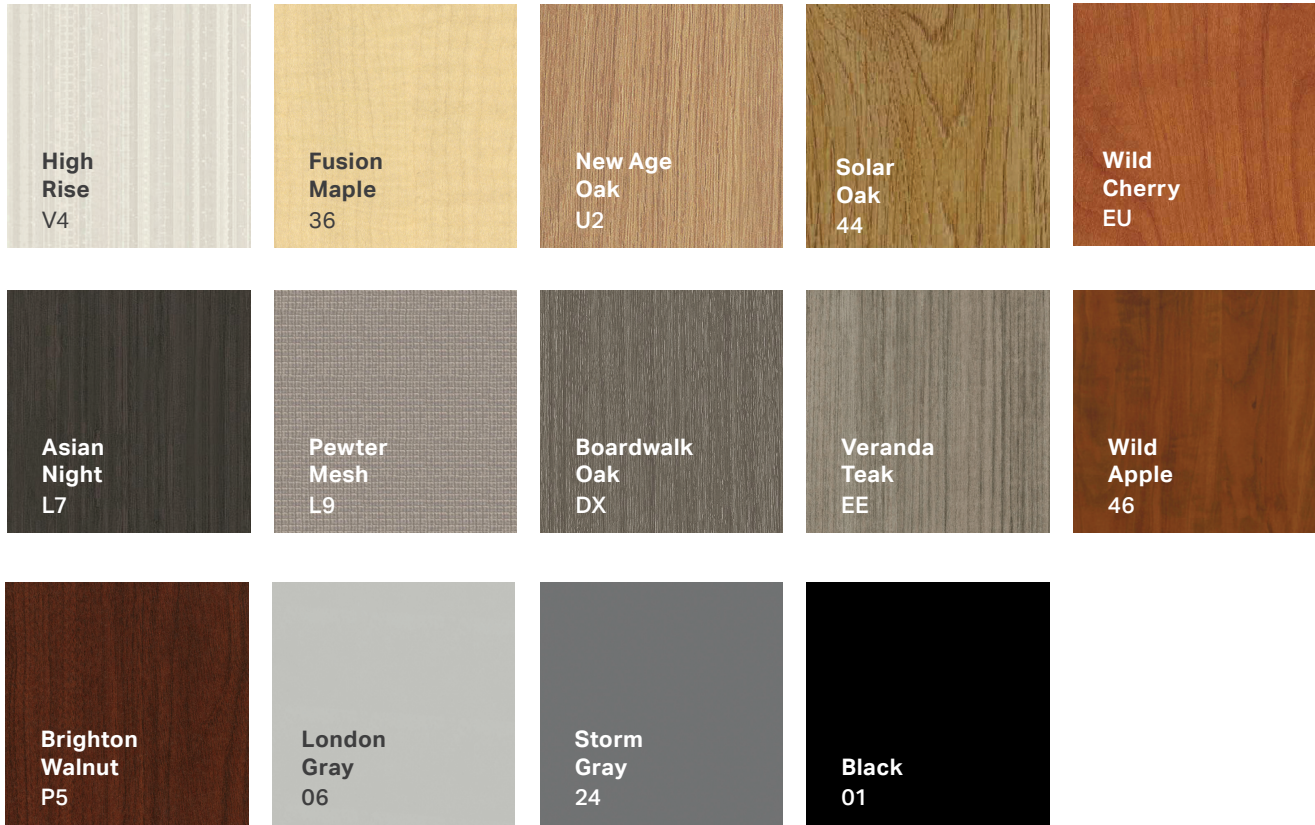


MARCO LAMINATE MATERIALS ARE CERTIFIED BY GREENGUARD.

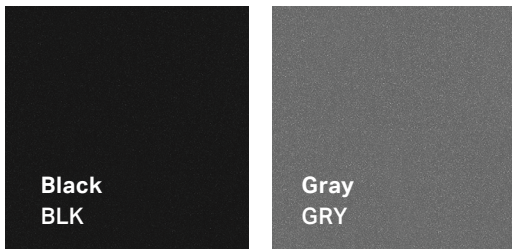
GREENGUARD Gold Certification offers stricter certification criteria, considers safety factors to account for sensitive individuals (such as children and the elderly), and ensures that a product is acceptable for use in environments such as schools and healthcare facilities. It is referenced by both The Collaborative for High Performance Schools (CHPS) and the Leadership in Energy and Environmental Design (LEED) Building Rating System.

Not all colors are available for every model. Please refer to each model description to see available color options and note shipping lead-times for specific colors, quantities and models. Due to pattern scale and color variations in computer monitors and printers, we recommend you view actual samples before making surface material selections.

Cabinetry Laminates



Metal Leg Colors



MARCO LAMINATE MATERIALS ARE CERTIFIED BY GREENGUARD.

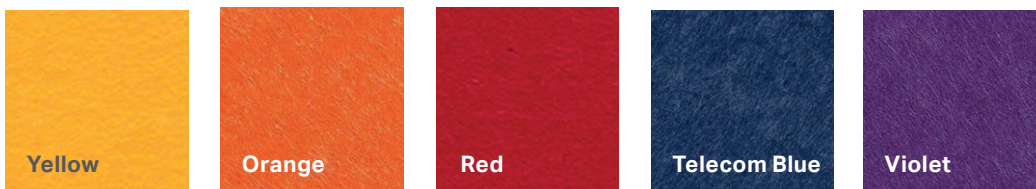
GREENGUARD Gold Certification offers stricter certification criteria, considers safety factors to account for sensitive individuals (such as children and the elderly), and ensures that a product is acceptable for use in environments such as schools and healthcare facilities. It is referenced by both The Collaborative for High Performance Schools (CHPS) and the Leadership in Energy and Environmental Design (LEED) Building Rating System.

Not all colors are available for every model. Please refer to each model description to see available color options and note shipping lead-times for specific colors, quantities and models. Due to pattern scale and color variations in computer monitors and printers, we recommend you view actual samples before making surface material selections.

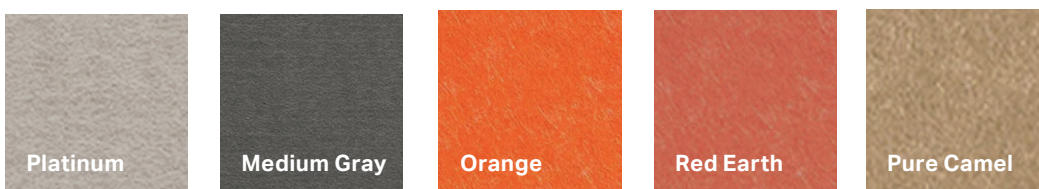
Acoustic PET Colors



Acoustic PET Color Set 1 (CS1)



Acoustic PET Color Set 2 (CS2)

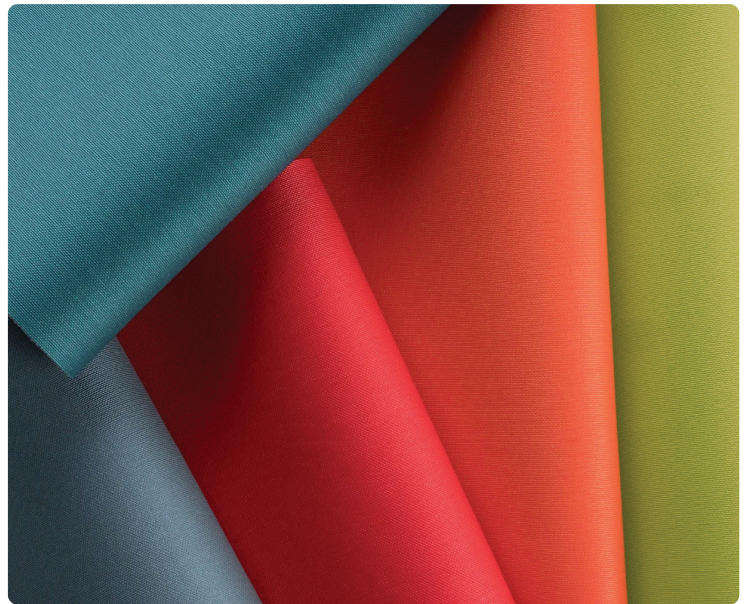


Not all colors are available for every model. Please refer to each model description to see available color options and note shipping lead-times for specific colors, quantities and models. Due to pattern scale and color variations in computer monitors and printers, we recommend you view actual samples before making surface material selections.

Standard Textiles

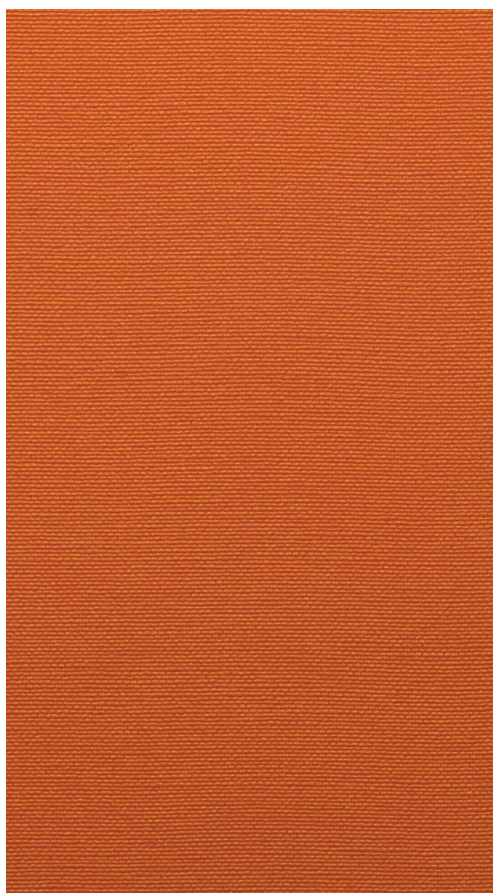
Our standard textiles are kept in stock to shorten order times and are based on colors that compliment with our other product lines such as our Apex and Premier Series furniture. The Silvertex textiles feature superior abrasion resistance, along with antifungal and antibacterial protection, which makes it a perfect material for classroom furniture use.

Models ordered with only Standard Colors ship within 4-6 weeks.



Silvertex Neo by Spradling

Grade 2 | Abrasion 100,000 double rubs | PVC with Permablock & Permaguard abrasion & stain resistance



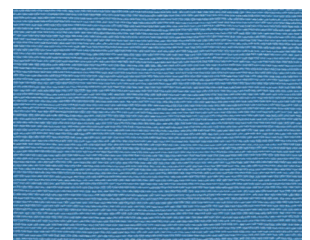
Bazaar
S96



Imperial
S97



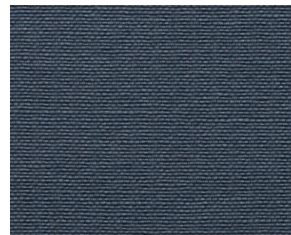
Acid
S92



Lagoon
S91



Blackberry
SA6



Storm
S90



Carbon
SA3



Plata
SA5



Marine Blue
SA0



Jet
S88

Due to pattern scale and color variations in computer monitors and printers, we recommend ordering a memo sample from the supplier using the contact information listed or call Marco at 888.627.2601 to ensure color accuracy.

Special Order Textiles

Models ordered with Special Order Textiles ship within 6-8 weeks.

EZ Vinyl by Spradling

Grade 1 | Abrasion 50,000 double rubs | more colors available



Wallaby Grey
EZY-5820



Wallaby Neutral
EZY-5809



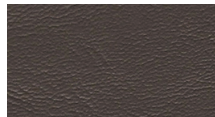
Wallaby Turquoise
EZY-5803



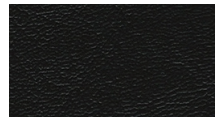
Wallaby Forest
EZY-5805



Wallaby Royal
EZY-5804



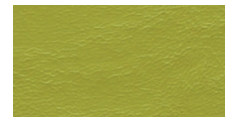
Wallaby Iron
EZY-5822



Wallaby Black
EZY-5823



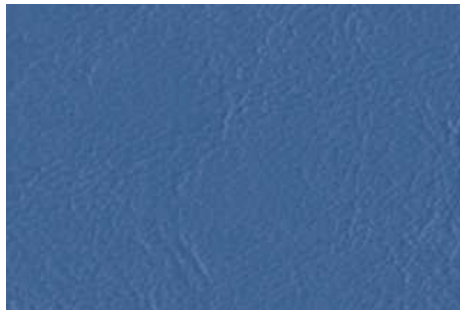
Sierra Torch Red
EZY-5824



Wallaby Lime
EZY-5806

Islander by Spradling

Grade 1 | Abrasion 50,000 double rubs | more colors available



Bristol Blue
ISL-9157



Silver Blue
ISL-9158



Ruby Red
ISL-9160



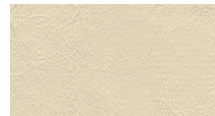
Baby Blue
ISL-9156



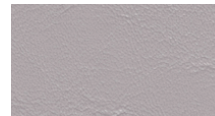
Yellow
ISL-9176



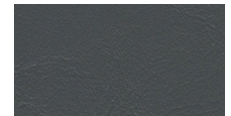
Everglade
ISL-9174



French Vanilla
ISL-9178



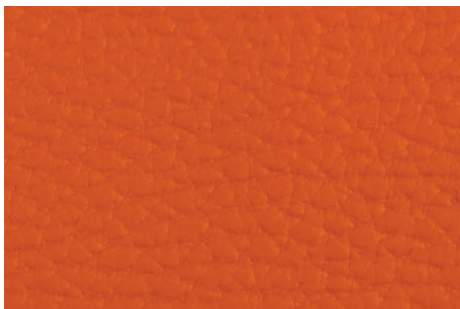
Light Gray
ISL-9152



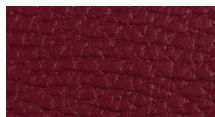
Gunmetal
ISL-9153

Beluga by Spradling

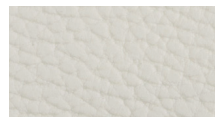
Grade 1 | Abrasion 100,000 double rubs | more colors available



Papaya
BEL-3306



Burgundy
BEL-3309



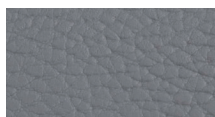
Off White
BEL-3303



Dune
BEL-3305



Ochre
BEL-3307



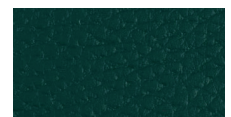
Pearl Grey
BEL-3310



Cherry
BEL-3308



True Blue
BEL-3312



Forest
BEL-3314

Special Order Textiles

Models ordered with Special Order Textiles ship within 6-8 weeks.

Navigator by Spradling

Grade 1 | Abrasion 100,000 double rubs | More colors available



Mermaid
NAV-9900



Sand Dollar
NAV-9895



Crimson
NAV-9904



Sundance
NAV-9906



Stone
NAV-9896



Valentine
NAV-9903



Capri
NAV-9899



Dolphin
NAV-9898



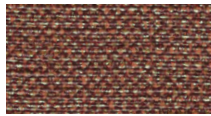
Purple Passion
NAV-9907

Kilkenny Tweed Neo by Spradling

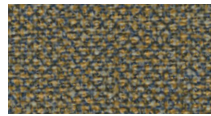
Grade 2 | Abrasion 50,000 double rubs | Vinyl-coated fabric (prop 65 compliant) | More colors available



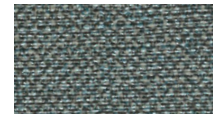
Stone
KIL-2901



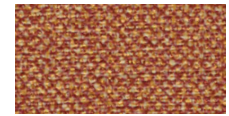
Apple Tort
KIL-2909



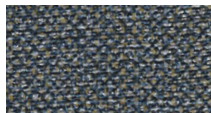
Burlap
KIL-2913



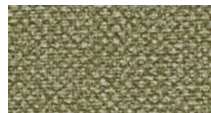
Ice
KIL-2916



Bittersweet
KIL-2904



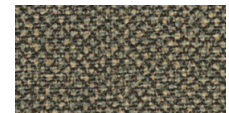
Nightshade
KIL-2917



Celery
KIL-2919



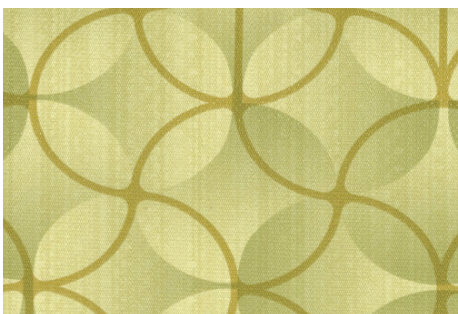
Claypot
KIL-2905



Charcoal
KIL-2923

Kaleidoscope by Spradling

Grade 2 | Abrasion 100,000 double rubs | 100% PVC vinyl / backing 100% polyester | More colors available



Citron
KAL-4401



Marsh
KAL-4402



Iceberg
KAL-4403



Teal
KAL-4406



Bronze
KAL-4412



Champagne
KAL-4409



Smokehouse
KAL-4410



Saffron
KAL-4411



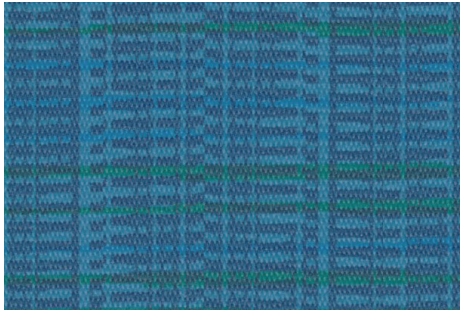
Bazaar
KAL-4413

Special Order Textiles

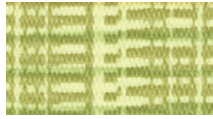
Models ordered with Special Order Textiles ship within 6-8 weeks.

Interlace Neo by Spradling

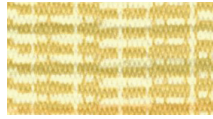
Grade 2 | Abrasion 50,000 double rubs | PVC with Permablock & Permaguard abrasion & stain resistance | More colors available



Peacock
INT-5401



Zest
INT-5403



Pollen
INT-5404



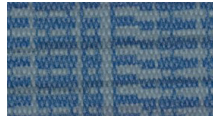
Salsa
INT-5405



Fresh
INT-5407



Flaxen
INT-5402



Indigo
INT-5409



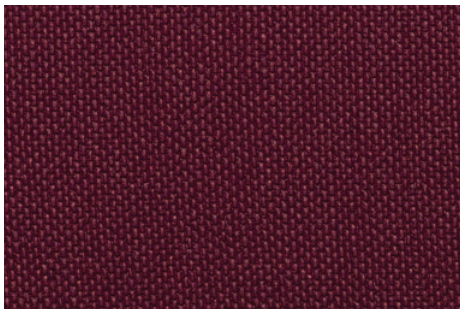
Pewter
INT-5406



Espresso
INT-5412

Silvertex Neo by Spradling

Grade 2 | Abrasion 100,000 double rubs | PVC with Permablock & Permaguard abrasion & stain resistance | More colors available



Raspberry
STX-8816



Sapphire
STX-8804



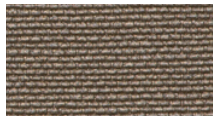
Turquoise
STX-8803



Cream
STX-8807



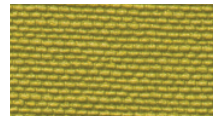
Champagne
STX-8808



Taupe
STX-8809



Limoncello
STX-8842



Zest
STX-8841



Mocha
STX-8825

Mingle by Mayer Fabrics

Grade 2 | Abrasion 250,000 double rubs | 80% Vinyl - Phthalate Free face, 20% Polyester backing | More colors available



Melon
MG-009



Straw
MG-002



Aloe
MG-003



Oyster
MG-047



Hemp
MG-027



Turquoise
MG-023



Rouge
MG-001



Indigo
MG-004



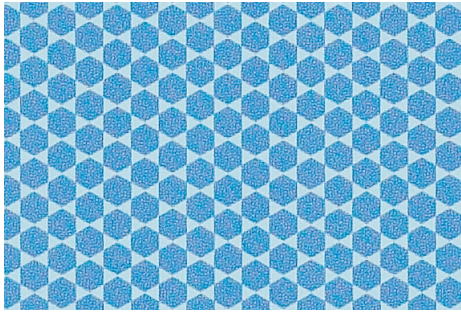
Sterling
MG-016

Special Order Textiles

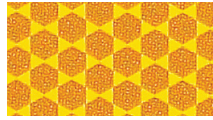
Models ordered with Special Order Textiles ship within 6-8 weeks.

Mogul by Momentum

Grade 3 | Abrasion 450,000 double rubs | 100% EPU Polyurethane: GREENGUARD Certified, PVC Free | More colors available



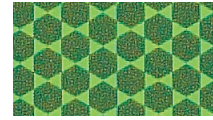
Digital
09462121



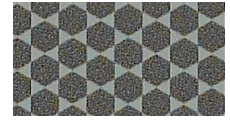
Asset
09462044



Bullseye
09462000



Envy
09462066



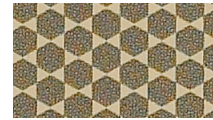
Boss
09461945



Finance
09462110



Flare
09462055



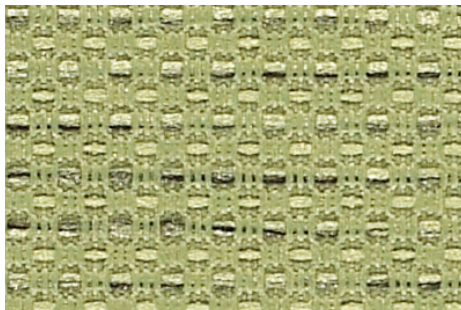
Heir
09461989



Genius
09462154

Sport by Momentum

Grade 3 | Abrasion 100,000 double rubs | 98% post-consumer recycled polyester and 2% polyester | More colors available



Aloe
09203808



Flax
09203786



Cadet
09203676



Downpour
09203709



Dayglow
09203643



Alarm
09203610



Mercury
09203720



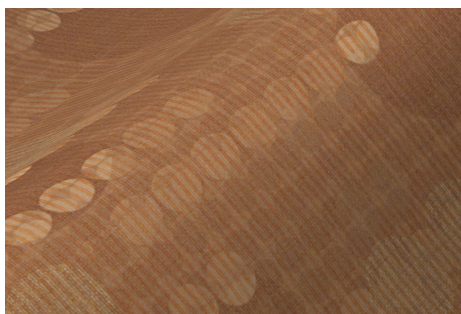
Apple
09203632



Turquoise
09203665

Gala by Mayer Fabrics

Grade 3 | Abrasion 100,000 double rubs | 81% vinyl with urethane topcoat face and 19% recycled polyester backing



Spice
GA-019



Quartz
GA-007



Bronze
GA-010



Honeycomb
GA-002



Sunset
GA-009



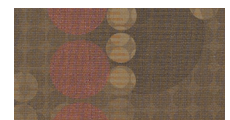
Limelight
MG-003



Aquamarine
GA-014



Skipper
GA-004



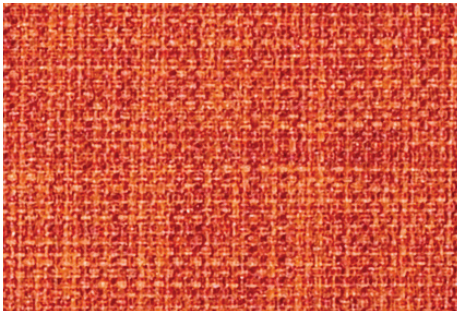
Truffle
GA-000

Special Order Textiles

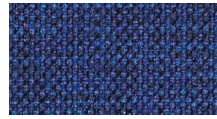
Models ordered with Special Order Textiles ship within 6-8 weeks.

Cover Cloth by Momentum

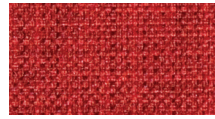
Grade 4 | Abrasion 200,000 double rubs | 56% Recycled Polyester, 44% Polyester, GREENGUARD Certified | More colors available



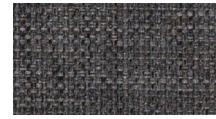
Zest
09137742



Electric
09137566



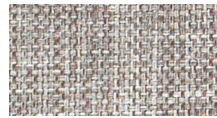
Flame
09137577



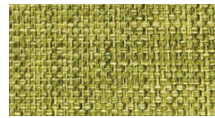
Graphite
09137588



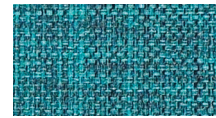
Oat
09137643



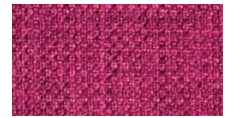
Platinum
09137654



Sorrel
09137687



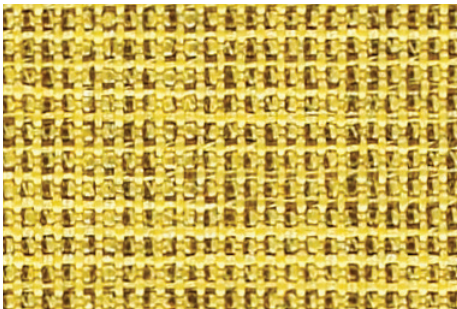
Cyan
09137544



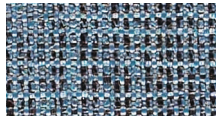
Fuchsia
09137753

Hobnob by Momentum

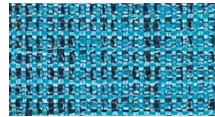
Grade 4 | Abrasion 87,000 double rubs | 51% Recycled Polyester, 49% Polyester, GREENGUARD Certified | More colors available



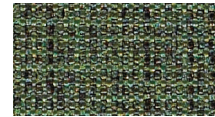
Limon
09210144



Bay
09209990



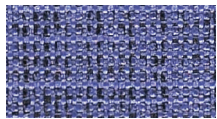
Beyond
09210012



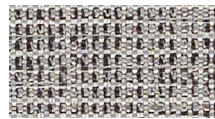
Forest
09210111



Ginger
09209902



Iris
09210023



Shale
09210078



Tangelo
09210045



Carbon
09209968

Balance by Mayer Fabrics

Grade 4 | Abrasion 1,300,000 double rubs | 80% Vinyl - Phthalate Free face, 20% Polyester backing | More colors available



Sea
BA-014



Metal
BA-006



Rose
BA-001



Jade
BA-013



Cream
BA-007



Pinot
BA-008



Celadon
BA-003



Copper
BA-009



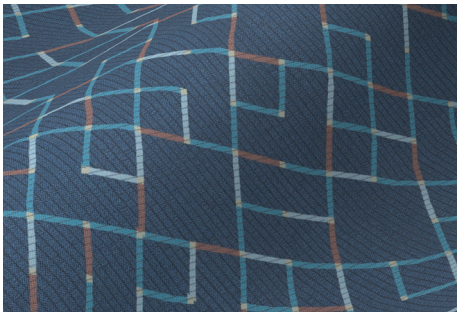
Denim
BA-004

Special Order Textiles

Models ordered with Special Order Textiles ship within 6-8 weeks.

Truss by Mayer Fabrics

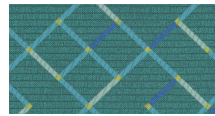
Grade 5 | Abrasion 250,000 double rubs | 80% Vinyl - Phthalate Free face, 20% Polyester backing



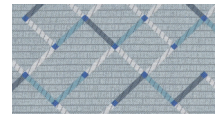
Cadet
TS-004



Current
TS-001



Ocean
TS-003



Aluminum
TS-006



Sesame
TS-007



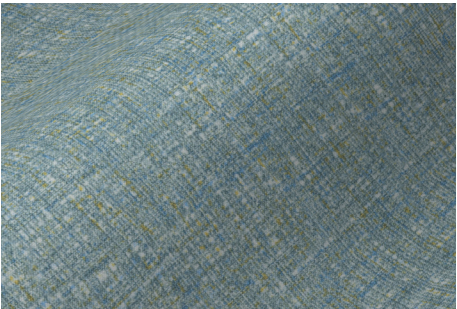
Persimmon
TS-009



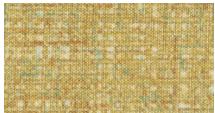
Storm
TS-016

Belmont by Mayer Fabrics

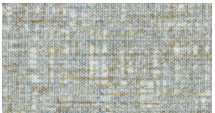
Grade 5 | Abrasion 250,000 double rubs | 80% Vinyl - Phthalate Free face, 20% Polyester backing | More colors available



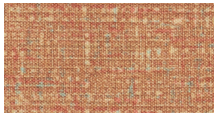
Opal
BL-004



Citrus
BL-002



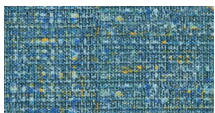
Sisal
BL-007



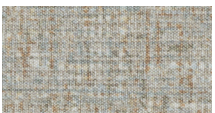
Clementine
BL-009



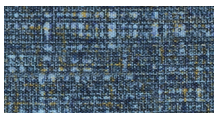
Patina
BL-027



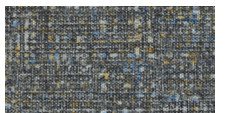
Reef
BL-014



Dune
BL-017



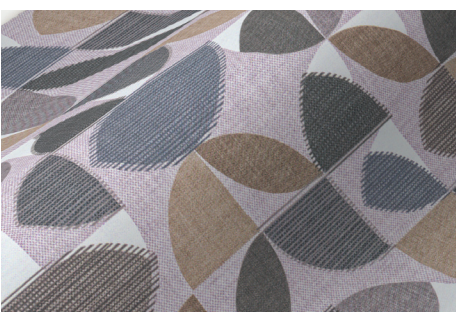
Tidal
BL-024



Gravel
BL-000

Carousel by Mayer Fabrics

Grade 6 | Abrasion 1,000,000 double rubs | 62% Polyurethane Polycarbonate - PVC Free/ 3% Silicone face, 35% Polyester backing



Mineral
CR-007



Rose Quartz
CR-001



Seaglass
CR-003



Harbor
CR-000



Sunset
CR-008



Fiesta
CR-013



Bluebird
CR-004

Products are to be used for their intended purpose and inspected on a regular basis to avoid structural failures and possible injury. Inspections are to include confirming there are no loose or missing screws, glides, rivets, casters, etc. Products are to be inspected for cracks, fatigue, or broken welds. Any product showing signs of damage or improper adjustment must be removed from service immediately and notice must be provided to MGI and the furnishing Dealer. Repairs are to be made with factory authorized parts.

LAMINATE SURFACES

- Do not drop heavy objects on laminate and melamine surfaces. It is possible to chip or gouge the surface if a heavy object is dropped on the table top abruptly.
- Do not place hot objects on laminate and melamine surfaces. It is possible to blister or warp the surface top.
- Do not use laminate and melamine surfaces as a cutting board. A sharp knife may slice a groove in the surface top.

Laminates should be cleaned with warm water and soap mixture and dried with a soft cloth. Spills should be wiped up quickly, though. If there is a hard to remove stain, a combination of mild cleaner and baking soda can be used to remove stains from the surface. Scrub with a stiff nylon brush, then clean as you normally would.

DO NOT USE

Harsh chemicals, abrasive bleach based cleaners, sharp writing utensils, or other sharp objects on your laminate or markerboard to avoid scratches.

MARKERBOARD CLEANING

To refresh your writing surface to its original luster, simply wipe entire surface with a soft cloth moistened with warm water or markerboard cleaner, and immediately wipe dry with a clean soft cloth.

- Use only Dry Erase Markers on your markerboard table. Do not use permanent markers as they can permanently stain the surface.
- Do not allow dry erase marker ink to remain on the table for several days without erasing. We recommend that you clean your markerboard weekly to prevent marker color build up.
- Use a dry erase marker to color over areas that are hard to clean or develop ghosting. Then erase the problem area. The solvent in the dry erase ink will frequently clean the soiled area.
- If permanent marker is used on the markerboard table in error, simply marking over the permanent ink with dry erase ink will often allow the permanent ink to be removed.

- Use only erasers that are designed for markerboards. Mr. Clean Magic Erasers work very well. Regular erasers do not work well. A clean soft cloth such as a white t-shirt can be used as an alternative.
- Use only cleaning solutions that are specifically made to clean markerboard. Apply the cleaner to the eraser or soft clean cloth, not directly to the markerboard. Here is a list of some popular cleaning products.
 - Expo Dry Erase Board Cleaner
 - Quartet BoardGear Markerboard Cleaner
 - Best Rite Green Erase Cleaner
 - Staples Sustainable Earth Multi Whiteboard Cleaner
 - Mar-Kleen Dry Erase Markerboard Cleaner
 - LCS Whiteboard Cleaner

VINYL SURFACES

GENERAL CARE

Remove most stains with one of the following steps:

Eye shadow, mascara, grease, black felt tip pen, crayon, chocolate, suntan lotion and hair/body oils–

Remove excess spill with a damp cloth. Clean with a 1:1 mix of Ivory soap and water. Rinse with clean water and dry.

Red Lipstick–

Use a straight application of concentrated cleaners such as Formula 409 or Fantastik spray cleaner. Wipe with a clean cloth, rinse with water and dry.

Blood, urine, feces, oil base paint, tar and asphalt–

Use a 1:1 mix of ammonia and water, or a 1:10 mix of bleach and water. Rinse with clean water and dry.

All other tough stains–

Use a 1:1 mix of isopropyl alcohol and water. If the stain persists, use straight alcohol. Rinse thoroughly with clean water and pat dry. Use a soft cotton cloth saturated with the cleaning material and rub the stain in circles 10 times. Pat dry with another soft cloth and check the results.

The cleaning recommendations above are a guide to help in the maintenance of vinyl fabrics. They are supplied without warranty, representation or inducement of any kind, including, but not limited to, the implied warranties of merchantability and fitness for particular use or purpose. Marco Group can neither guarantee, nor take responsibility for specific results. Under no circumstances shall Marco Group be liable for any incidental, consequential, or other damage resulting from negligence, misuse, mishandling or exposure of any chemicals used in connection with maintenance. Information relating to chemicals/cleaning solvents, environmental use, and human exposure should be reviewed with appropriate suppliers. Users must read the product specifications and determine appropriateness for specific applications. All label instruction precautions should be followed. All cleaning agents must be rinsed thoroughly with water and wiped with a soft cloth. Residue left by cleaning agents will shorten the life of the product if not removed.