



**MARCO™**

Environments for Learning







**MARCO™**

**Design with intention.**

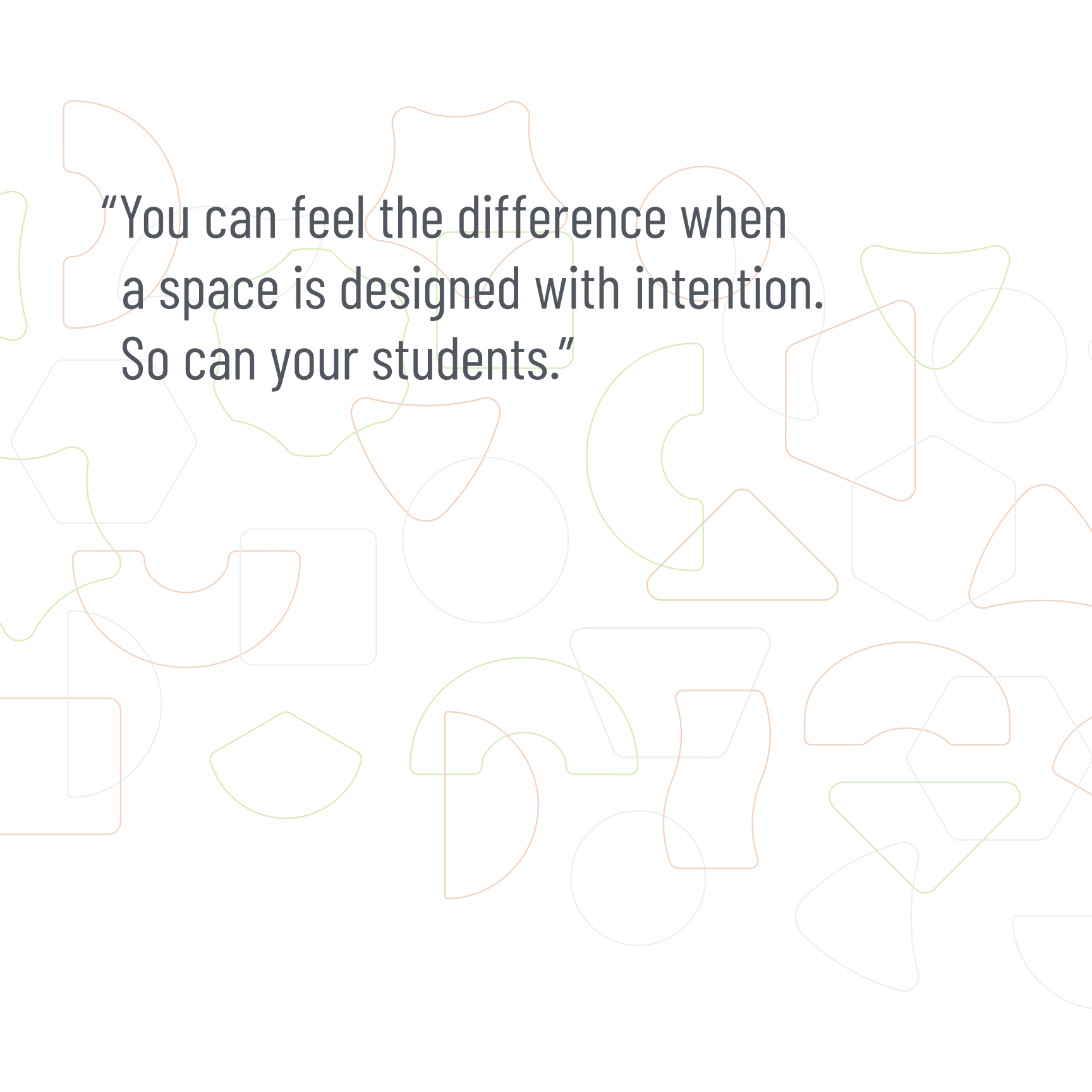
Because great spaces don't just happen—they're built with intention.

At Marco, every product is designed to shape how students learn and educators lead. With American-made precision and honest craftsmanship, we create environments that inspire focus, curiosity, and creativity—because when design works, learning takes shape.





BASE SHELF CABINETS, CUSHION CADDY, FLOOR ROCKER, FLOOR TABLE  
SONIK STEP SERIES + OTTOMANS, INSTRUCTOR STATION, 12-CUBBIE STORAGE  
FLOOR BENCH, APEX SERIES STACKING CHAIRS + GAS LIFT TASK CHAIR, PREMIER STAR TABLES

The background features a collection of overlapping, hand-drawn geometric shapes in three colors: orange, green, and light blue. The shapes include circles, triangles, squares, and various irregular polygons, some of which are partially obscured by others, creating a layered and dynamic visual effect.

**“You can feel the difference when  
a space is designed with intention.  
So can your students.”**







APEX SERIES WAVE TABLES,  
APEX SERIES STACKING CHAIRS

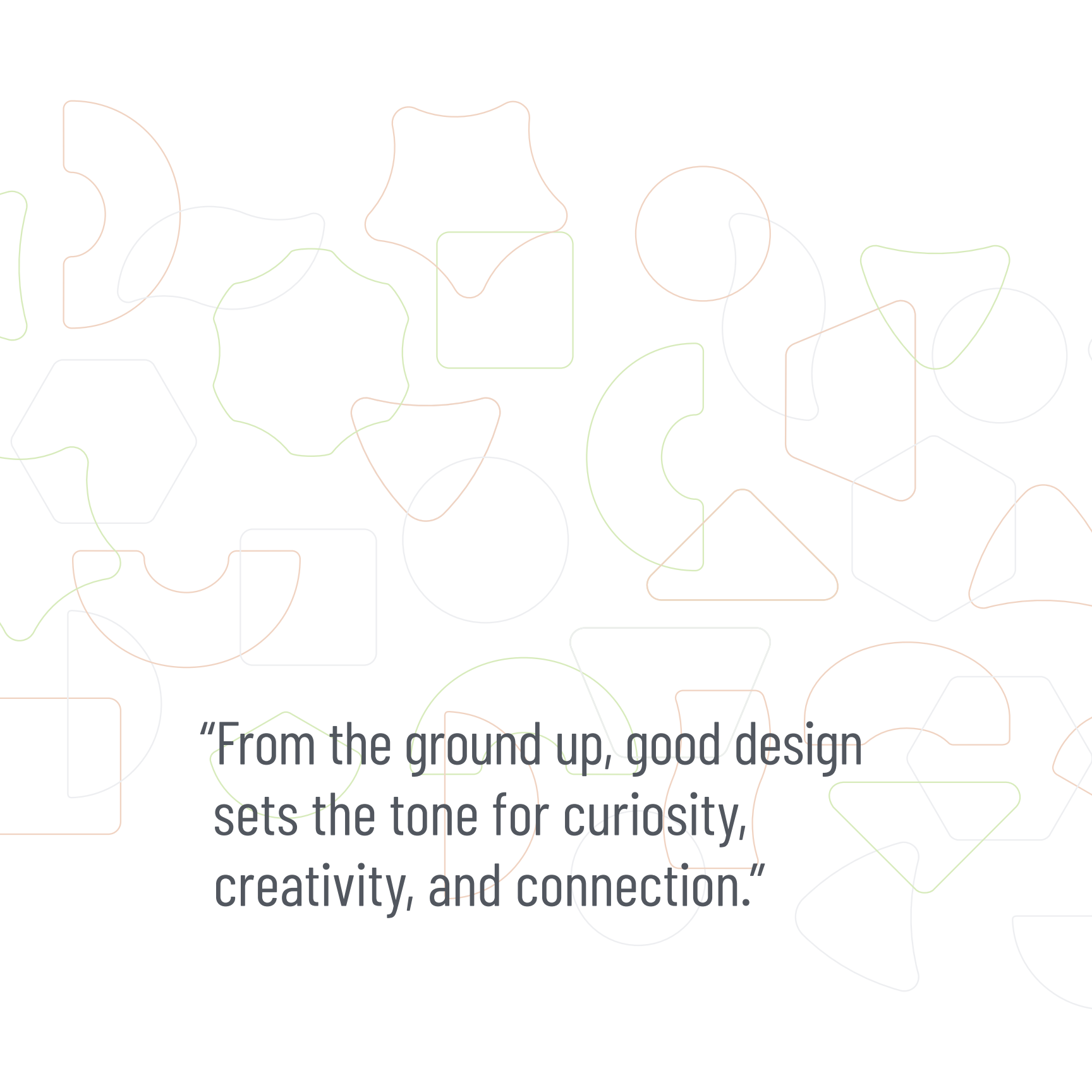




CIRCULATION DESK, CURVED MOBILE BOOKCASES, DOUBLE-SIDED BOOKCASES, PREMIER STACKING CHAIRS, PREMIER SERIES ROUND TABLES, MOBILE DIVIDER, CUSHIONED SWIVEL STOOLS, MULTIMEDIA TABLE, SONIK SOFT SEATING, SHAPESCAPES





The background features a collection of overlapping, hand-drawn geometric shapes in three colors: orange, green, and blue. The shapes include circles, squares, triangles, and various irregular polygons, some of which are partially obscured by others, creating a layered and dynamic visual effect.

**“From the ground up, good design  
sets the tone for curiosity,  
creativity, and connection.”**





MARCO MANUFACTURING



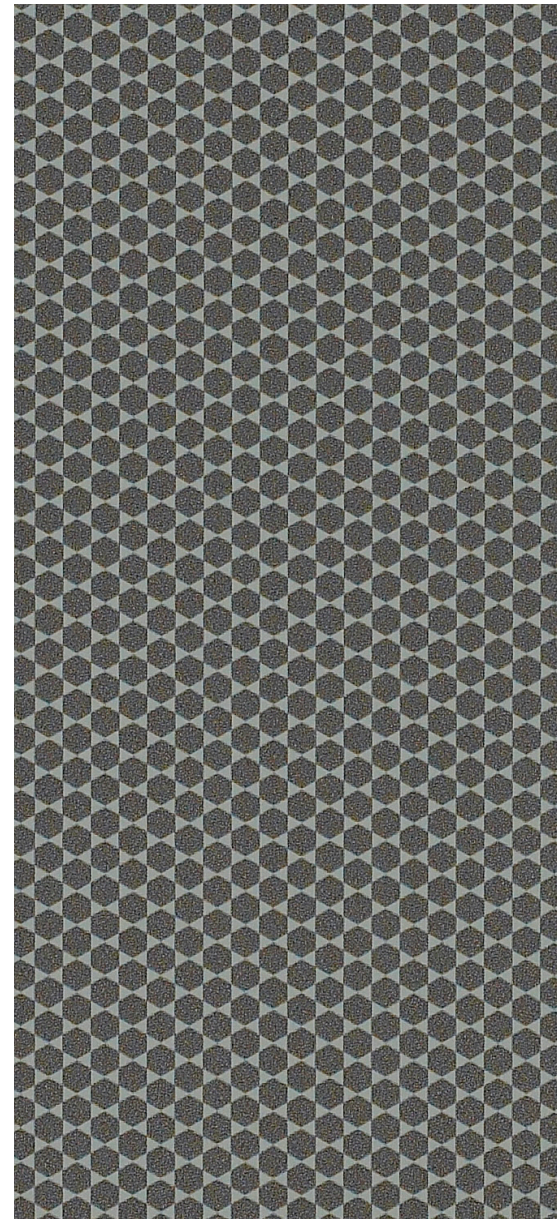
High-Spec  
Color Chart

F. Rockers  
Petals  
Round ottos

You Are Beautiful... You Are Smart! You Are  
High. You Will Do Great

GO RANGERS!





BANDSTOR UNIFORM + ROBE STORAGE + INSTRUMENT STORAGE  
ENCORE MOBILE CART, SONIK RECTANGLE BENCHES






BANDSTOR INSTRUMENT STORAGE WITH WIRE DOORS





PREMIER SERIES CHEVRON DESKS, PREMIER RECTANGLE TABLE,  
CUE COLLECTION, APEX SERIES STACKING CHAIRS +  
ADJUSTABLE STOOLS + GAS LIFT TASK CHAIR

The background features a collection of overlapping, semi-transparent geometric shapes in three colors: orange, green, and blue. These shapes include circles, squares, hexagons, and various irregular polygons, some of which are partially obscured by others, creating a layered, abstract pattern.

**“The best learning environments  
are built to adapt—just like  
the students and teachers  
who use them.”**





**CUE COLLECTION, BOOKCASE,  
APEX SERIES GAS LIFT TASK CHAIR,  
PREMIER RECTANGLE DESKS + STACKING CHAIRS**







INSTRUCTOR STATION, SONIK ROUND OTTOMANS + RECTANGLE BENCH,  
APEX SERIES STACKING CHAIRS + GAS LIFT TASK CHAIRS + GEM DESKS + KIDNEY TABLE,  
SUMMIT MOBILE STORAGE CARTS, BASE CABINETS + TEACHERS WARDROBE CABINET, SHAPSCAPES



HORIZON MOBILE STORAGE CARTS, CUE COLLECTION, SHAPESCAPES, BASE CABINETS, FLOOR ROCKERS, CUSHION CADDY, SONIK ROUND OTTOMAN, APEX SERIES HEXAGON TABLES + ROUND FLOOR TABLES + STACKING CHAIR + GAS LIFT TASK CHAIR





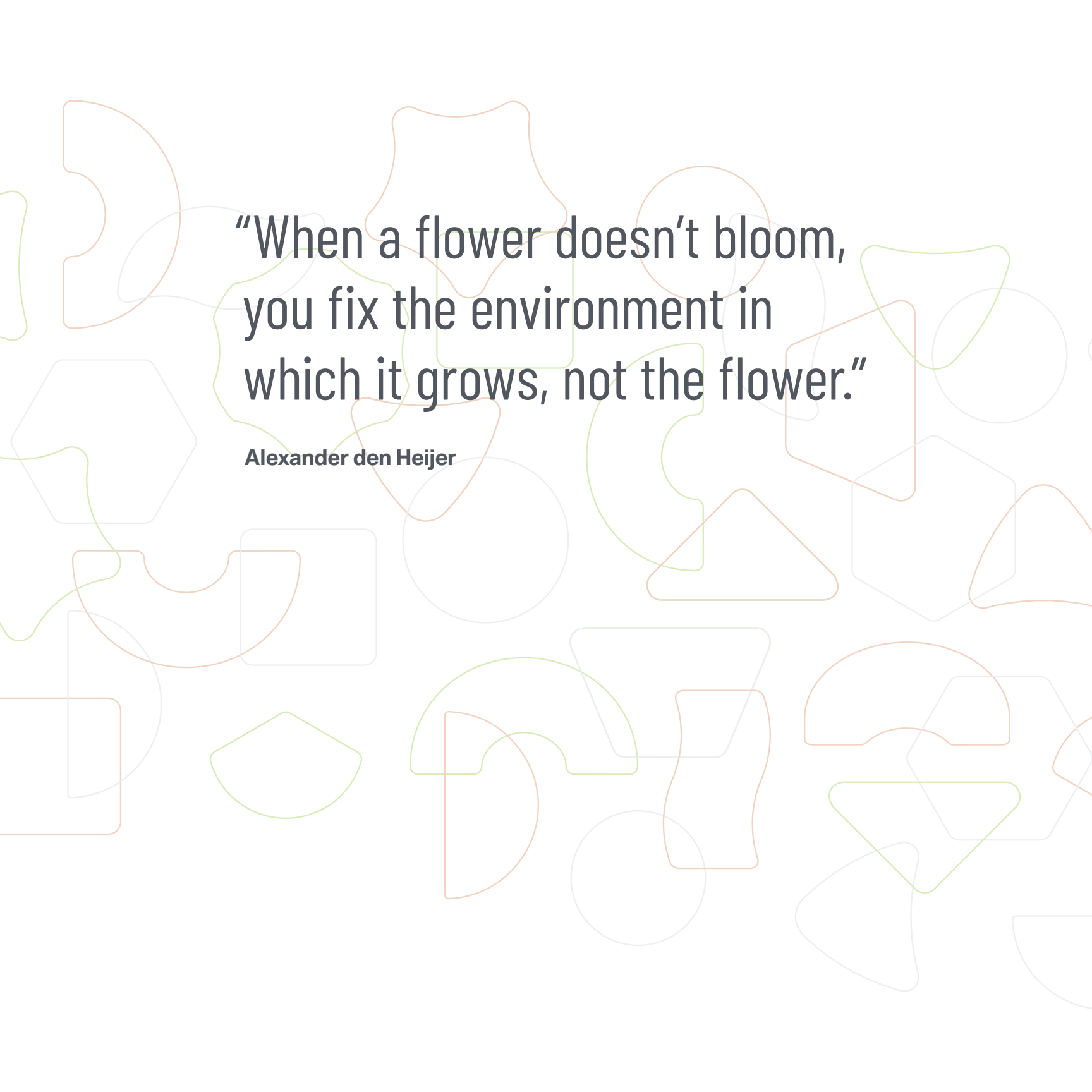
APEX SERIES STACKING CHAIRS + ADJUSTABLE STOOLS + GAS LIFT TASK CHAIRS,  
SONIK SOFT SEATING + PLATFORM TABLE, MEETING TABLES, CAFE TABLES,  
MULTIMEDIA TABLE, MOBILE DIVIDER, FLIP & NEST TRAINING TABLES







SONIK ROUND OTTOMAN, CURVED SINGLE-SIDED MOBILE BOOKCASE

The background features a collection of overlapping, semi-transparent geometric shapes in various colors including orange, green, blue, and grey. These shapes include circles, hexagons, pentagons, and irregular polygons, some of which are partially cut off by the edges of the frame. The overall effect is a dynamic and layered pattern.

“When a flower doesn’t bloom,  
you fix the environment in  
which it grows, not the flower.”

Alexander den Heijer





MULTIMEDIA TABLE, APEX SERIES ADJUSTABLE STOOLS, MOBILE DIVIDER





GRAVIT8 TABLE, MINUTE STOOLS, SUMMIT MOBILE STORAGE CARTS,  
BASE CABINETS + GENERAL STORAGE CABINETS + TEACHERS WARDROBE CABINET







**BANDSTOR INSTRUMENT STORAGE**



DISCOVERY WORKSTATION, APEX SERIES ADJUSTABLE STOOLS







APEX SERIES STACKING CHAIRS



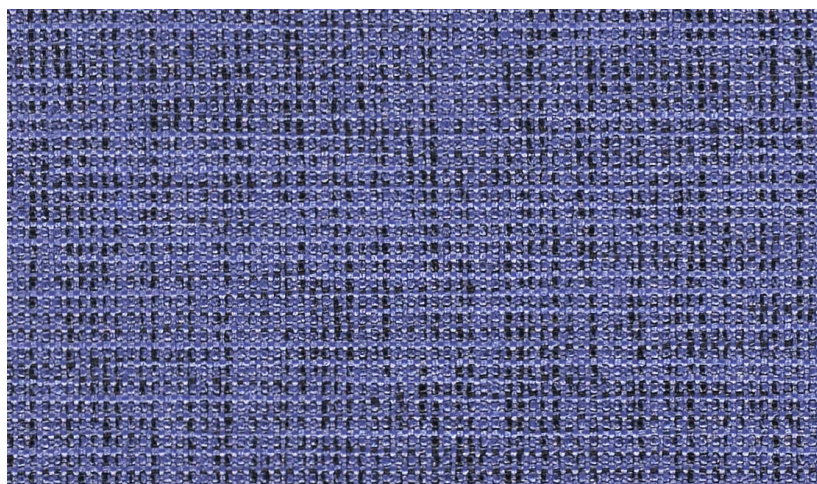
**"Design creates culture.  
Culture shapes values.  
Values determine the future."**

**Robert L. Peters**





APEX SERIES ADJUSTABLE STOOLS + STACKING CHAIRS,  
PREMIER SERIES RECTANGLE TABLES, SONIK CONVERSATION STATIONS







HORIZON MOBILE STORAGE CARTS,  
APEX SERIES STACKING CHAIRS + CHEVRON & GEM DESKS



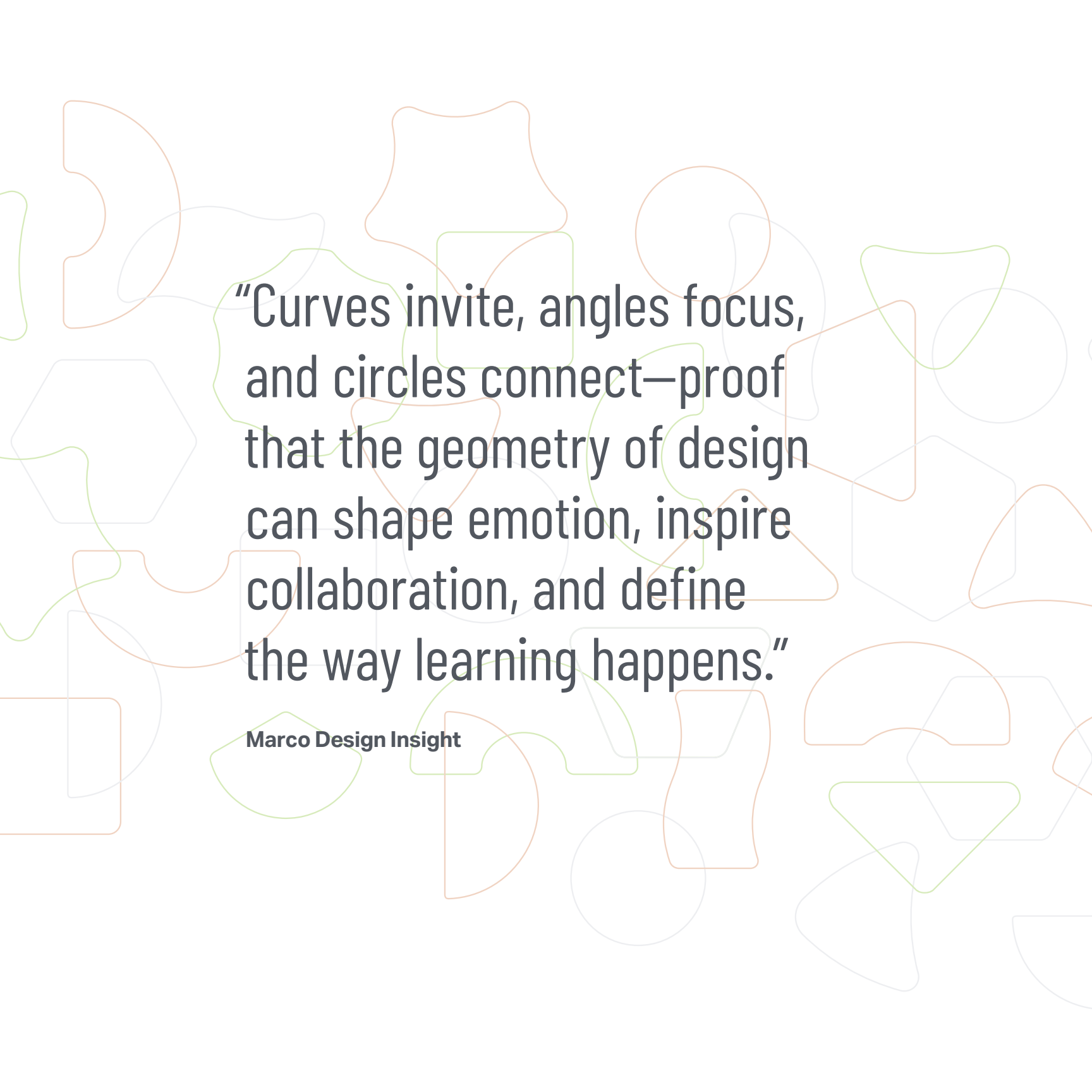


BANDSTOR INSTRUMENT STORAGE WITH WIRE DOORS





BANDSTOR INSTRUMENT STORAGE, PREMIER SERIES STACKING CHAIRS,  
CONDUCTOR PODIUM, MOBILE CELLO RACK, FOLIO CABINETS,  
MUSIC LIBRARY SYSTEM, SHAPESCAPES

The background features a pattern of overlapping, hand-drawn geometric shapes in three colors: orange, green, and blue. The shapes include circles, hexagons, squares, and various irregular polygons, some of which are partially obscured by others, creating a layered effect.

**"Curves invite, angles focus,  
and circles connect—proof  
that the geometry of design  
can shape emotion, inspire  
collaboration, and define  
the way learning happens."**

**Marco Design Insight**







PREMIER SERIES GEM DESKS, APEX SERIES STACKING CHAIRS,  
INSTRUCTOR STATION, DOUBLE-SIDED CURVED BOOKCASES





APEX SERIES DELTA TABLES + STACKING CHAIRS, SONIK ROUND OTTOMANS



DISCOVERY WORKSTATION, APEX SERIES STACKING CHAIRS + ADJUSTABLE STOOLS,  
BASE CABINETS + GENERAL STORAGE CABINETS, PREMIER SERIES RECTANGLE TABLES, SUMMIT MOBILE STORAGE CARTS





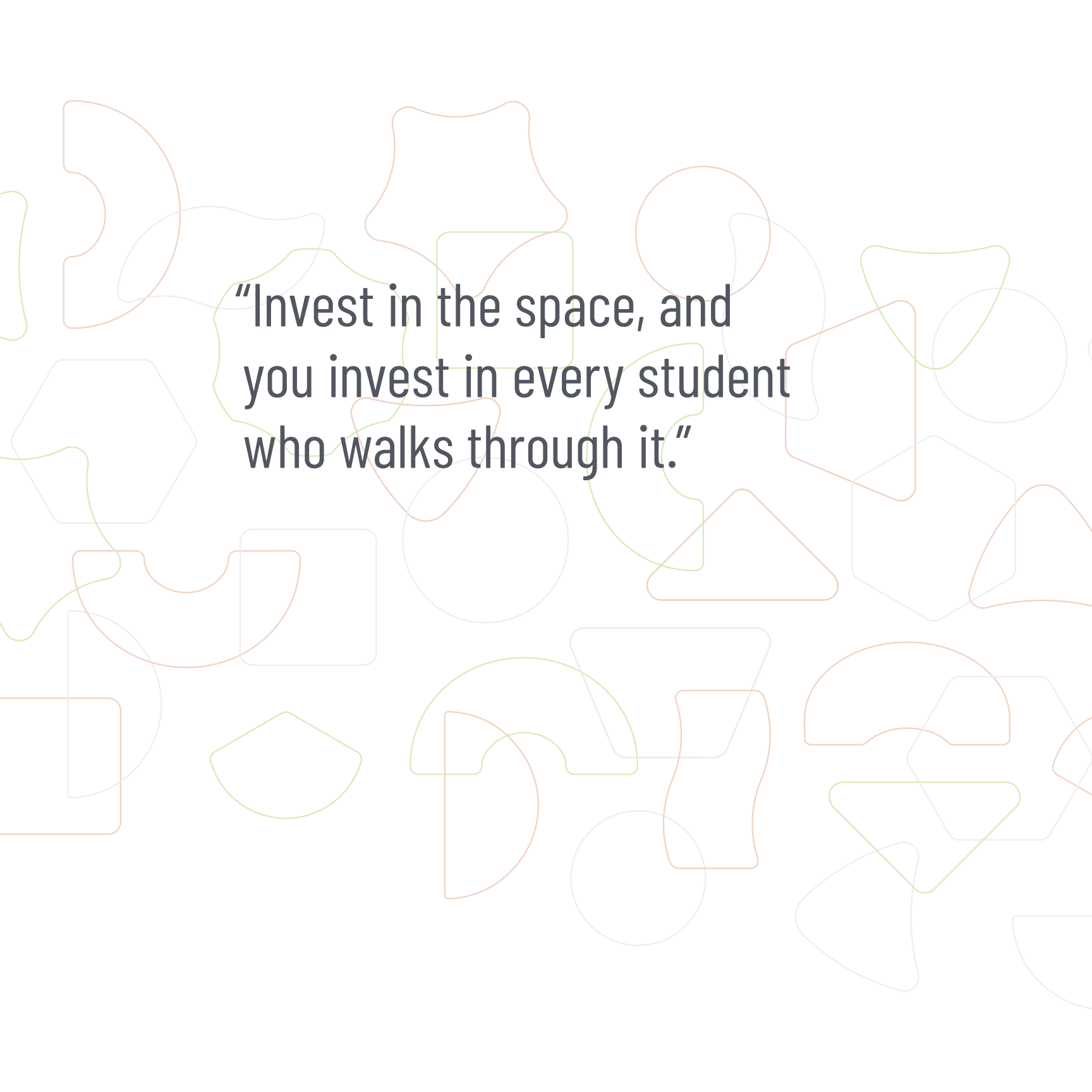
BANDSTOR INSTRUMENT STORAGE, MUSIC LIBRARY SYSTEM





BASE CABINETS, PREMIER SERIES STACKING CHAIR, T-LEG TABLES, SHAPESCAPES



The background features a collection of overlapping, hand-drawn geometric shapes in three colors: orange, green, and light blue. The shapes include circles, triangles, squares, hexagons, and various irregular polygons, some of which are partially obscured by others, creating a layered, abstract pattern.

**"Invest in the space, and  
you invest in every student  
who walks through it."**







MOBILE DIVIDER, INSTRUCTOR STATION, PREMIER RECTANGLE TABLE,  
APEX SERIES STACKING CHAIR, SONIK ROUND OTTOMANS






BANDSTOR INSTRUMENT STORAGE WITH NO DOORS, PREMIER SERIES STACKING CHAIRS, CONDUCTOR PODIUM, PERCUSSION MOBILE WORKSTATION, SHAPESCAPES, SONIK RECTANGLE BENCH



BANDSTOR UNIFORM + ROBE STORAGE



The background features a collection of overlapping, hand-drawn geometric shapes in three colors: orange, green, and blue. The shapes include circles, triangles, hexagons, and various irregular polygons, some of which are partially obscured by others, creating a layered and dynamic visual effect.

“Learning environments  
should ignite imagination,  
foster connection, and  
support every student’s  
unique journey.”







FLOOR DELTA TABLE, SONIK ROUND OTTOMANS, FLOOR ROCKERS



**MARCO™**

Explore how Marco is shaping the future of learning. Visit [madebymarco.net](http://madebymarco.net).