

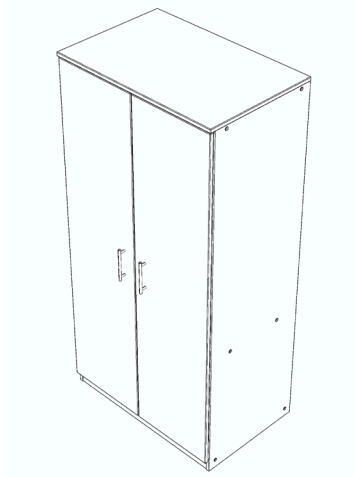


MARCO™

Specification Sheet

MOBILE CASEGOODS

General Storage (Model 3331)

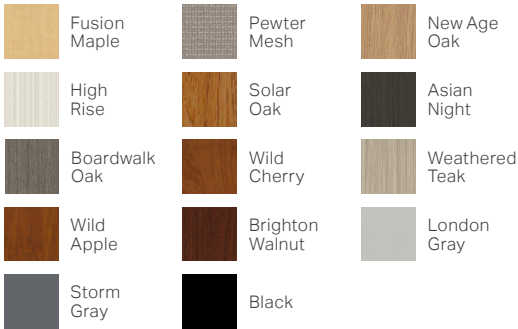


CONSTRUCTION

- Cabinet constructed of 3/4" particleboard substrate with thermally fused laminate surface on both sides
- 3mm PVC edge banding
- Concealed casters for cabinet mobility (not available on 84" height cabinets)
- Panels are assembled with bolt-through steel tube construction and mar-block fasteners
- Shelves are 1" thick to reduce risk of sagging
- European style door hinges
- Steel drawer sides with 5/8" bottom
- Modern door pull options with brushed nickel or black powder coat
- Internal levelers for easy installation
- Optional door and drawer locks

FINISHES

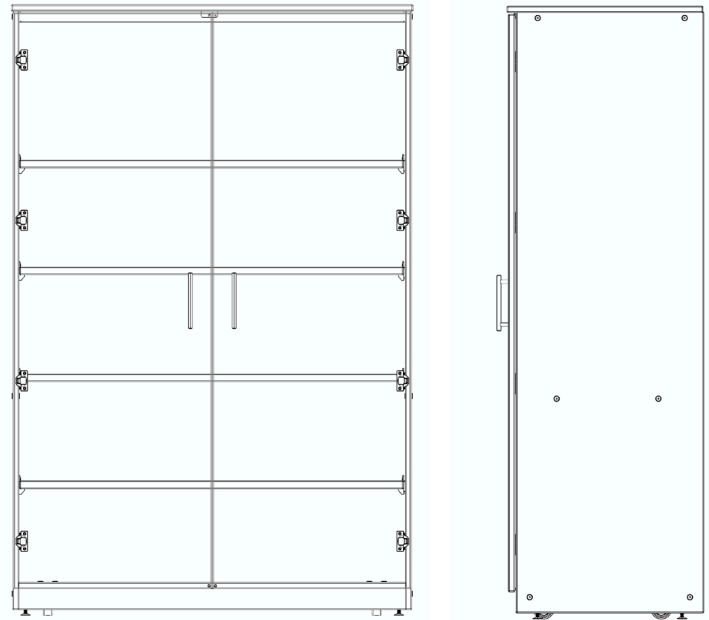
LAMINATES



DIMENSIONS

| Model # | Description | W | D | H | WT |
|-----------------|------------------------------|----|----|----|-----|
| 3331-36723-x0xx | NL Doors, 4 Adj Shelves | 36 | 24 | 72 | 270 |
| 3331-36723-x1xx | Locking Doors, 4 Adj Shelves | 36 | 24 | 72 | 270 |
| 3331-36724-x0xx | NL Doors, 4 Adj Shelves | 36 | 30 | 72 | 310 |
| 3331-36724-x1xx | Locking Doors, 4 Adj Shelves | 36 | 30 | 72 | 310 |
| 3331-36843-x2xx | NL Doors, 5 Adj Shelves | 36 | 24 | 84 | 315 |
| 3331-36843-x3xx | Locking Doors, 5 Adj Shelves | 36 | 24 | 84 | 315 |
| 3331-36844-x2xx | NL Doors, 5 Adj Shelves | 36 | 30 | 84 | 375 |
| 3331-36844-x3xx | Locking Doors, 5 Adj Shelves | 36 | 30 | 84 | 375 |
| 3331-48723-x0xx | NL Doors, 4 Adj Shelves | 48 | 24 | 72 | 320 |
| 3331-48723-x1xx | Locking Doors, 4 Adj Shelves | 48 | 24 | 72 | 320 |
| 3331-48724-x0xx | NL Doors, 4 Adj Shelves | 48 | 30 | 72 | 380 |
| 3331-48724-x1xx | Locking Doors, 4 Adj Shelves | 48 | 30 | 72 | 380 |
| 3331-48843-x2xx | NL Doors, 5 Adj Shelves | 48 | 24 | 84 | 375 |
| 3331-48843-x3xx | Locking Doors, 5 Adj Shelves | 48 | 24 | 84 | 375 |
| 3331-48844-x2xx | NL Doors, 5 Adj Shelves | 48 | 30 | 84 | 445 |
| 3331-48844-x3xx | Locking Doors, 5 Adj Shelves | 48 | 30 | 84 | 445 |

NL= Non-Locking



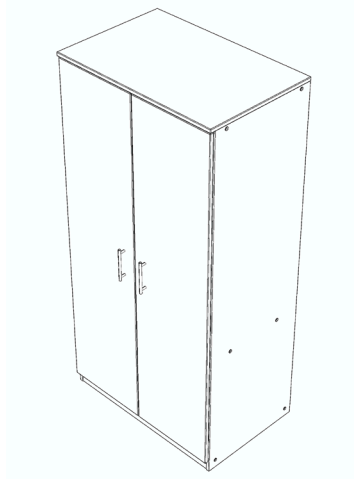
WARRANTY

10 Year Limited

CERTIFICATIONS

UL Greenguard Gold certified

This specification information is provided for general reference only and is subject to change without notice. While every effort has been made to ensure accuracy, Marco makes no warranties, express or implied, regarding the completeness or correctness of the details presented. Users should always verify specifications with the latest product documentation before making any purchasing decisions.

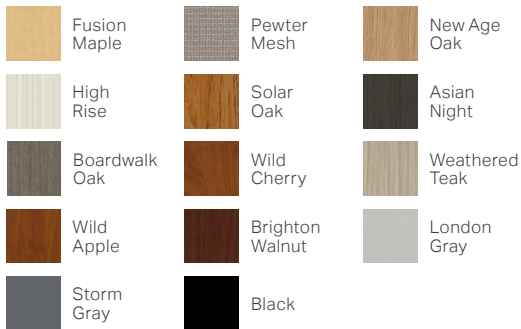


CONSTRUCTION

- Cabinet constructed of 3/4" particleboard substrate with thermally fused laminate surface on both sides
- 3mm PVC edge banding
- Concealed casters for cabinet mobility (not available on 84" height cabinets)
- Panels are assembled with bolt-through steel tube construction and mar-block fasteners
- Shelves are 1" thick to reduce risk of sagging
- European style door hinges
- Steel drawer sides with 5/8" bottom
- Modern door pull options with brushed nickel or black powder coat
- Internal levelers for easy installation
- Optional door and drawer locks

FINISHES

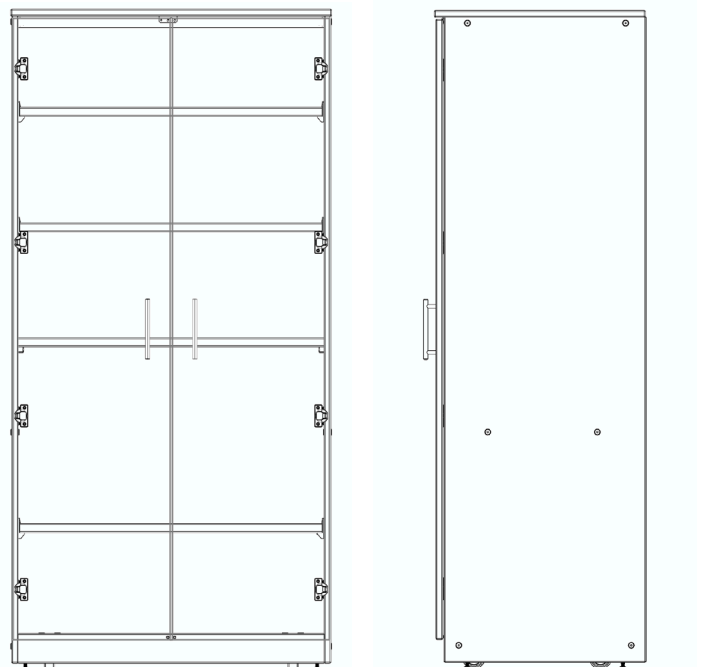
LAMINATES



DIMENSIONS

| Model # | Description | W | D | H | WT |
|-----------------|--|----|----|----|-----|
| 3332-36723-x0xx | NL Doors, 1 Fixed / 3 Adj Shelves | 36 | 24 | 72 | 270 |
| 3332-36723-x1xx | Locking Doors, 1 Fixed / 3 Adj Shelves | 36 | 24 | 72 | 270 |
| 3332-36724-x0xx | NL Doors, 1 Fixed / 3 Adj Shelves | 36 | 30 | 72 | 310 |
| 3332-36724-x1xx | Locking Doors, 1 Fixed / 3 Adj Shelves | 36 | 30 | 72 | 310 |
| 3332-36843-x2xx | NL Doors, 1 Fixed / 4 Adj Shelves | 36 | 24 | 84 | 315 |
| 3332-36843-x3xx | Locking Doors, 1 Fixed / 4 Adj Shelves | 36 | 24 | 84 | 315 |
| 3332-36844-x2xx | NL Doors, 1 Fixed / 4 Adj Shelves | 36 | 30 | 84 | 375 |
| 3332-36844-x3xx | Locking Doors, 1 Fixed / 4 Adj Shelves | 36 | 30 | 84 | 375 |
| 3332-48723-x0xx | NL Doors, 1 Fixed / 3 Adj Shelves | 48 | 24 | 72 | 320 |
| 3332-48723-x1xx | Locking Doors, 1 Fixed / 3 Adj Shelves | 48 | 24 | 72 | 320 |
| 3332-48724-x0xx | NL Doors, 1 Fixed / 3 Adj Shelves | 48 | 30 | 72 | 380 |
| 3332-48724-x1xx | Locking Doors, 1 Fixed / 3 Adj Shelves | 48 | 30 | 72 | 380 |
| 3332-48843-x2xx | NL Doors, 1 Fixed / 4 Adj Shelves | 48 | 24 | 84 | 375 |
| 3332-48843-x3xx | Locking Doors, 1 Fixed / 4 Adj Shelves | 48 | 24 | 84 | 375 |
| 3332-48844-x2xx | NL Doors, 1 Fixed / 4 Adj Shelves | 48 | 30 | 84 | 445 |
| 3332-48844-x3xx | Locking Doors, 1 Fixed / 4 Adj Shelves | 48 | 30 | 84 | 445 |

NL= Non-Locking



WARRANTY

10 Year Limited

CERTIFICATIONS

UL Greenguard Gold certified

This specification information is provided for general reference only and is subject to change without notice. While every effort has been made to ensure accuracy, Marco makes no warranties, express or implied, regarding the completeness or correctness of the details presented. Users should always verify specifications with the latest product documentation before making any purchasing decisions.

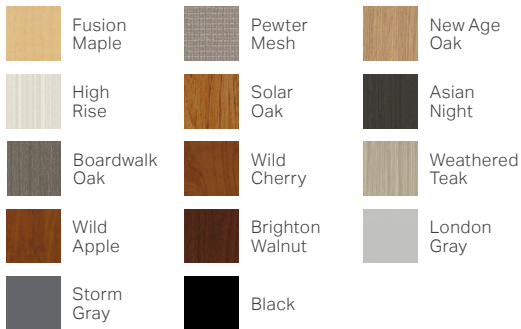


CONSTRUCTION

- Cabinet constructed of 3/4" particleboard substrate with thermally fused laminate surface on both sides
- 3mm PVC edge banding
- Concealed casters for cabinet mobility (not available on 84" height cabinets)
- Panels are assembled with bolt-through steel tube construction and mar-block fasteners
- Shelves are 1" thick to reduce risk of sagging
- European style door hinges
- Steel drawer sides with 5/8" bottom
- Modern door pull options with brushed nickel or black powder coat
- Internal levelers for easy installation
- Optional door and drawer locks

FINISHES

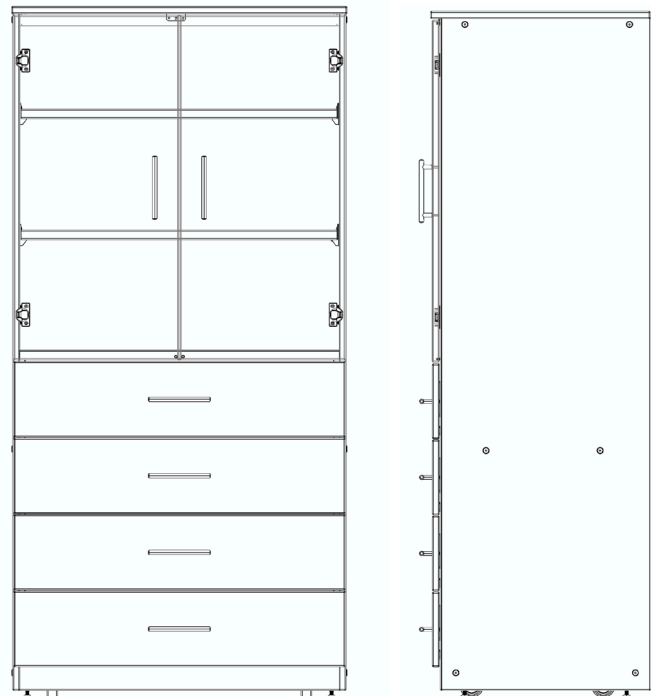
LAMINATES



DIMENSIONS

| Model # | Description | W | D | H | WT |
|-----------------|---------------------------------------|----|----|----|-----|
| 3333-36723-x0xx | NL Doors, 4 NL Drawers, 2 Adj Shelves | 36 | 24 | 72 | 335 |
| 3333-36723-x1xx | L Doors, 4 L Drawers, 2 Adj Shelves | 36 | 24 | 72 | 335 |
| 3333-36724-x0xx | NL Doors, 4 NL Drawers, 2 Adj Shelves | 36 | 30 | 72 | 380 |
| 3333-36724-x1xx | L Doors, 4 L Drawers, 2 Adj Shelves | 36 | 30 | 72 | 380 |
| 3333-36843-x2xx | NL Doors, 4 NL Drawers, 3 Adj Shelves | 36 | 24 | 84 | 385 |
| 3333-36843-x3xx | L Doors, 4 L Drawers, 3 Adj Shelves | 36 | 24 | 84 | 385 |
| 3333-36844-x2xx | NL Doors, 4 NL Drawers, 3 Adj Shelves | 36 | 30 | 84 | 430 |
| 3333-36844-x3xx | L Doors, 4 L Drawers, 3 Adj Shelves | 36 | 30 | 84 | 430 |
| 3333-48723-x0xx | NL Doors, 4 NL Drawers, 2 Adj Shelves | 48 | 24 | 72 | 430 |
| 3333-48723-x1xx | L Doors, 4 L Drawers, 2 Adj Shelves | 48 | 24 | 72 | 430 |
| 3333-48724-x0xx | NL Doors, 4 NL Drawers, 2 Adj Shelves | 48 | 30 | 72 | 485 |
| 3333-48724-x1xx | L Doors, 4 L Drawers, 2 Adj Shelves | 48 | 30 | 72 | 485 |
| 3333-48843-x2xx | NL Doors, 4 NL Drawers, 3 Adj Shelves | 48 | 24 | 84 | 485 |
| 3333-48843-x3xx | L Doors, 4 L Drawers, 3 Adj Shelves | 48 | 24 | 84 | 485 |
| 3333-48844-x2xx | NL Doors, 4 NL Drawers, 3 Adj Shelves | 48 | 30 | 84 | 550 |
| 3333-48844-x3xx | L Doors, 4 L Drawers, 3 Adj Shelves | 48 | 30 | 84 | 550 |

NL= Non-Locking L = Locking



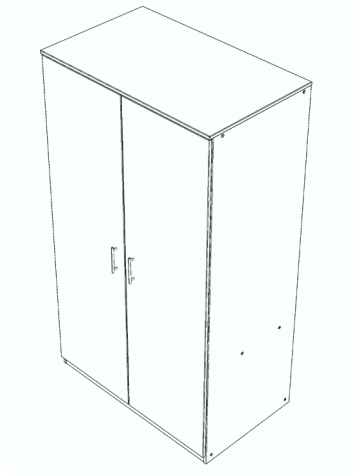
WARRANTY

10 Year Limited

CERTIFICATIONS

UL Greenguard Gold certified

This specification information is provided for general reference only and is subject to change without notice. While every effort has been made to ensure accuracy, Marco makes no warranties, express or implied, regarding the completeness or correctness of the details presented. Users should always verify specifications with the latest product documentation before making any purchasing decisions.

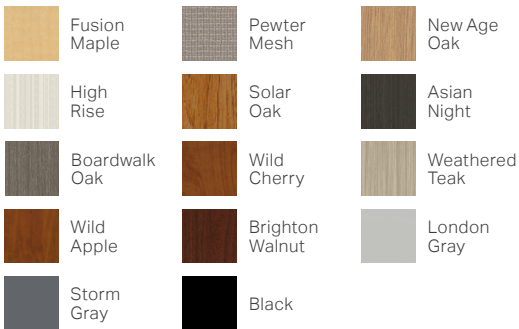


CONSTRUCTION

- Cabinet constructed of 3/4" particleboard substrate with thermally fused laminate surface on both sides
- 3mm PVC edge banding
- Concealed casters for cabinet mobility (not available on 84" height cabinets)
- Panels are assembled with bolt-through steel tube construction and mar-block fasteners
- Shelves are 1" thick to reduce risk of sagging
- European style door hinges
- Steel drawer sides with 5/8" bottom
- Modern door pull options with brushed nickel or black powder coat
- Internal levelers for easy installation
- Optional door and drawer locks

FINISHES

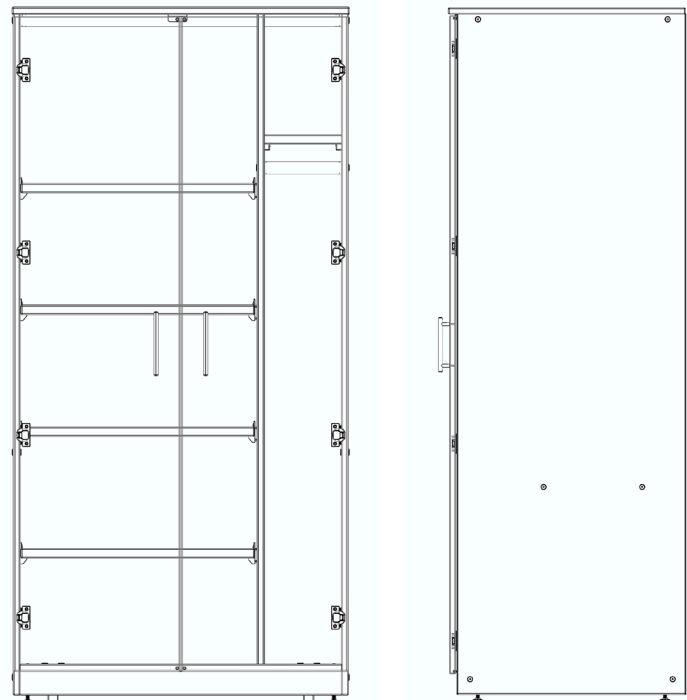
LAMINATES



DIMENSIONS

| Model # | Description | W | D | H | WT |
|-----------------|--|----|----|----|-----|
| 3335-36723-x0xx | NL Doors, 1 Fixed & 4 Adj Shelves, H-Rod | 36 | 24 | 72 | 285 |
| 3335-36723-x1xx | L Doors, 1 Fixed & 4 Adj Shelves, H-Rod | 36 | 24 | 72 | 285 |
| 3335-36724-x0xx | NL Doors, 1 Fixed & 4 Adj Shelves, H-Rod | 36 | 30 | 72 | 340 |
| 3335-36724-x1xx | L Doors, 1 Fixed & 4 Adj Shelves, H-Rod | 36 | 30 | 72 | 340 |
| 3335-36843-x2xx | NL Doors, 1 Fixed & 5 Adj Shelves, H-Rod | 36 | 24 | 84 | 335 |
| 3335-36843-x3xx | L Doors, 1 Fixed & 5 Adj Shelves, H-Rod | 36 | 24 | 84 | 335 |
| 3335-36844-x2xx | NL Doors, 1 Fixed & 5 Adj Shelves, H-Rod | 36 | 30 | 84 | 395 |
| 3335-36844-x3xx | L Doors, 1 Fixed & 5 Adj Shelves, H-Rod | 36 | 30 | 84 | 395 |
| 3335-48723-x0xx | NL Doors, 1 Fixed & 4 Adj Shelves, H-Rod | 48 | 24 | 72 | 355 |
| 3335-48723-x1xx | L Doors, 1 Fixed & 4 Adj Shelves, H-Rod | 48 | 24 | 72 | 355 |
| 3335-48724-x0xx | NL Doors, 1 Fixed & 4 Adj Shelves, H-Rod | 48 | 30 | 72 | 420 |
| 3335-48724-x1xx | L Doors, 1 Fixed & 4 Adj Shelves, H-Rod | 48 | 30 | 72 | 420 |
| 3335-48843-x2xx | NL Doors, 1 Fixed & 5 Adj Shelves, H-Rod | 48 | 24 | 84 | 415 |
| 3335-48843-x3xx | L Doors, 1 Fixed & 5 Adj Shelves, H-Rod | 48 | 24 | 84 | 415 |
| 3335-48844-x2xx | NL Doors, 1 Fixed & 5 Adj Shelves, H-Rod | 48 | 30 | 84 | 495 |
| 3335-48844-x3xx | L Doors, 1 Fixed & 5 Adj Shelves, H-Rod | 48 | 30 | 84 | 495 |

NL = Non-Locking L = Locking H-Rod = Hanger Rod



WARRANTY

10 Year Limited

CERTIFICATIONS

UL Greenguard Gold certified

This specification information is provided for general reference only and is subject to change without notice. While every effort has been made to ensure accuracy, Marco makes no warranties, express or implied, regarding the completeness or correctness of the details presented. Users should always verify specifications with the latest product documentation before making any purchasing decisions.

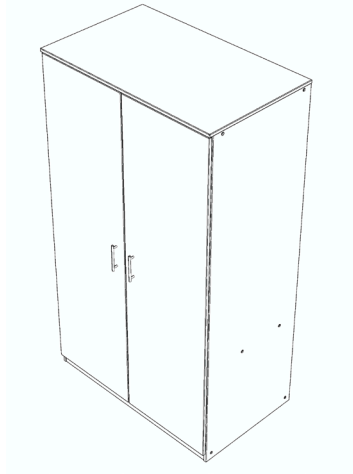


MARCO™

Specification Sheet

MOBILE CASEGOODS

General Storage w/ Divider (Model 3336)



DIMENSIONS

| Model # | Description | W | D | H | WT |
|-----------------|--|----|----|----|-----|
| 3336-48723-x0xx | NL Doors, Divider, 8 Adj Shelves | 48 | 24 | 72 | 345 |
| 3336-48723-x1xx | Locking Doors, Divider, 8 Adj Shelves | 48 | 24 | 72 | 345 |
| 3336-48724-x0xx | NL Doors, Divider, 8 Adj Shelves | 48 | 30 | 72 | 415 |
| 3336-48724-x1xx | Locking Doors, Divider, 8 Adj Shelves | 48 | 30 | 72 | 415 |
| 3336-48843-x2xx | NL Doors, Divider, 10 Adj Shelves | 48 | 24 | 84 | 420 |
| 3336-48843-x3xx | Locking Doors, Divider, 10 Adj Shelves | 48 | 24 | 84 | 420 |
| 3336-48844-x2xx | NL Doors, Divider, 10 Adj Shelves | 48 | 30 | 84 | 495 |
| 3336-48844-x3xx | Locking Doors, Divider, 10 Adj Shelves | 48 | 30 | 84 | 495 |

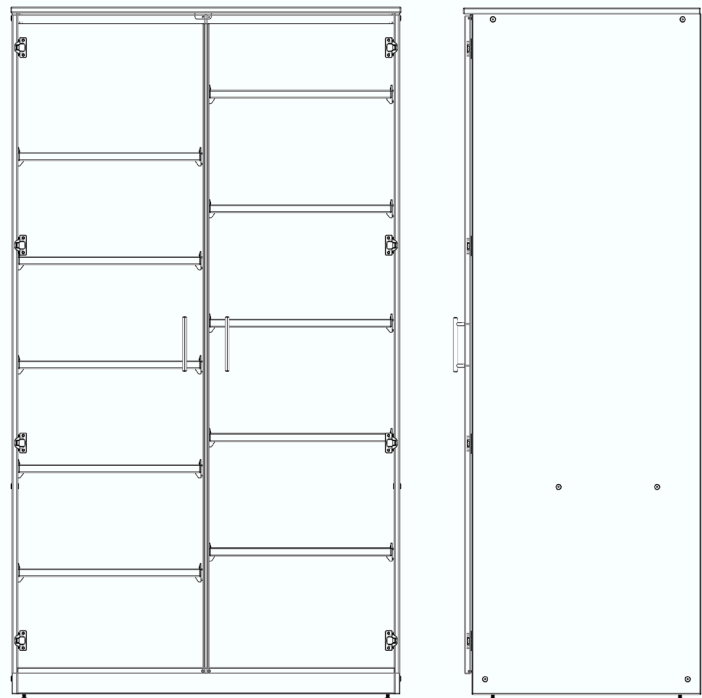
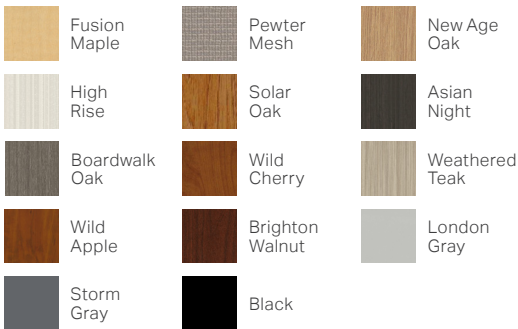
NL = Non-Locking

CONSTRUCTION

- Cabinet constructed of 3/4" particleboard substrate with thermally fused laminate surface on both sides
- 3mm PVC edge banding
- Concealed casters for cabinet mobility (not available on 84" height cabinets)
- Panels are assembled with bolt-through steel tube construction and mar-block fasteners
- Shelves are 1" thick to reduce risk of sagging
- European style door hinges
- Steel drawer sides with 5/8" bottom
- Modern door pull options with brushed nickel or black powder coat
- Internal levelers for easy installation
- Optional door and drawer locks

FINISHES

LAMINATES



WARRANTY

10 Year Limited

CERTIFICATIONS

UL Greenguard Gold certified

This specification information is provided for general reference only and is subject to change without notice. While every effort has been made to ensure accuracy, Marco makes no warranties, express or implied, regarding the completeness or correctness of the details presented. Users should always verify specifications with the latest product documentation before making any purchasing decisions.



MARCO™

Specification Sheet

MOBILE CASEGOODS

Base Shelf Cabinet (Model 3300)

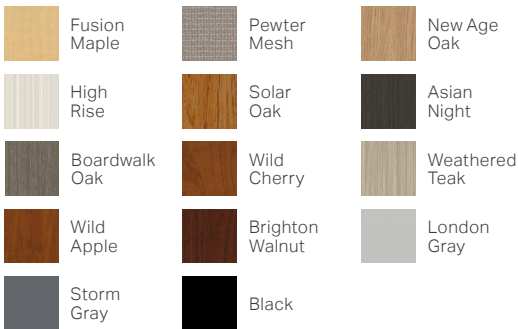


CONSTRUCTION

- Cabinet constructed of 3/4" particleboard substrate with thermally fused laminate surface on both sides
- 3mm PVC edge banding
- Concealed casters for cabinet mobility (not available on 84" height cabinets)
- Panels are assembled with bolt-through steel tube construction and mar-block fasteners
- Shelves are 1" thick to reduce risk of sagging
- European style door hinges
- Steel drawer sides with 5/8" bottom
- Modern door pull options with brushed nickel or black powder coat
- Internal levelers for easy installation
- Optional door and drawer locks

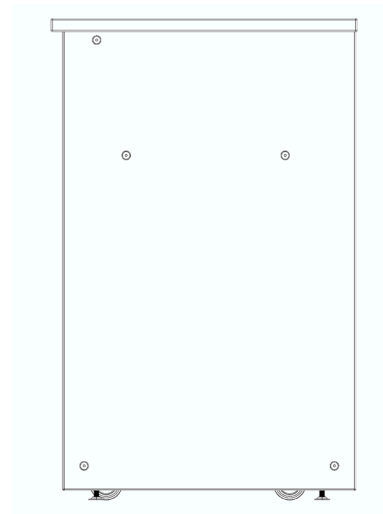
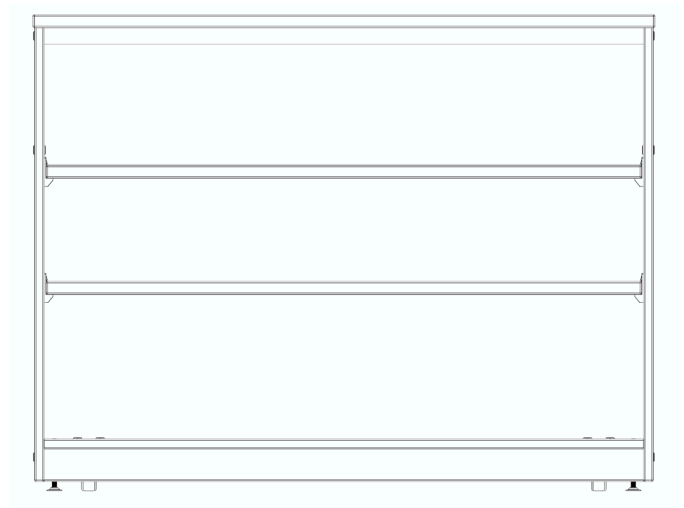
FINISHES

LAMINATES



DIMENSIONS

| Model # | Description | W | D | H | WT |
|-----------------|-------------------------|----|----|----|-----|
| 3300-36303-x0xx | No Doors, 1 Adj Shelf | 36 | 24 | 30 | 110 |
| 3300-36363-x0xx | No Doors, 2 Adj Shelves | 36 | 24 | 36 | 135 |
| 3300-48303-x0xx | No Doors, 1 Adj Shelf | 48 | 24 | 30 | 140 |
| 3300-48363-x0xx | No Doors, 2 Adj Shelf | 48 | 24 | 36 | 165 |



WARRANTY

10 Year Limited

CERTIFICATIONS

UL Greenguard Gold certified

This specification information is provided for general reference only and is subject to change without notice. While every effort has been made to ensure accuracy, Marco makes no warranties, express or implied, regarding the completeness or correctness of the details presented. Users should always verify specifications with the latest product documentation before making any purchasing decisions.

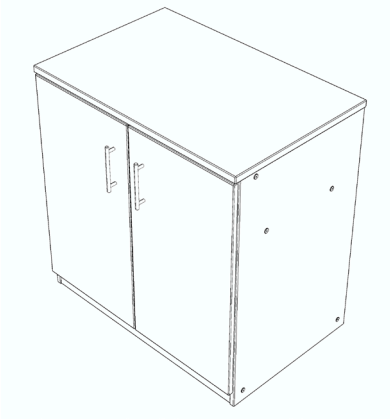


MARCO™

Specification Sheet

MOBILE CASEGOODS

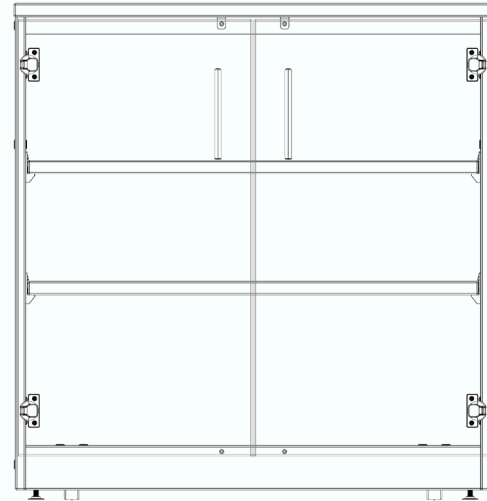
Base Door Cabinet (Model 3301)



DIMENSIONS

| Model # | Description | W | D | H | WT |
|-----------------|------------------------------|----|----|----|-----|
| 3301-36303-x0xx | NL Doors, 1 Adj Shelf | 36 | 24 | 30 | 130 |
| 3301-36303-x1xx | Locking Doors, 1 Adj Shelf | 36 | 24 | 30 | 130 |
| 3301-36363-x0xx | NL Doors, 2 Adj Shelves | 36 | 24 | 36 | 160 |
| 3301-36363-x1xx | Locking Doors, 2 Adj Shelves | 36 | 24 | 36 | 160 |
| 3301-48303-x0xx | NL Doors, 1 Adj Shelf | 48 | 24 | 30 | 165 |
| 3301-48303-x1xx | Locking Doors, 1 Adj Shelf | 48 | 24 | 30 | 165 |
| 3301-48363-x0xx | NL Doors, 2 Adj Shelves | 48 | 24 | 36 | 195 |
| 3301-48363-x1xx | Locking Doors, 2 Adj Shelves | 48 | 24 | 36 | 195 |

NL = Non-Locking



CONSTRUCTION

- Cabinet constructed of 3/4" particleboard substrate with thermally fused laminate surface on both sides
- 3mm PVC edge banding
- Concealed casters for cabinet mobility (not available on 84" height cabinets)
- Panels are assembled with bolt-through steel tube construction and mar-block fasteners
- Shelves are 1" thick to reduce risk of sagging
- European style door hinges
- Steel drawer sides with 5/8" bottom
- Modern door pull options with brushed nickel or black powder coat
- Internal levelers for easy installation
- Optional door and drawer locks

FINISHES

LAMINATES

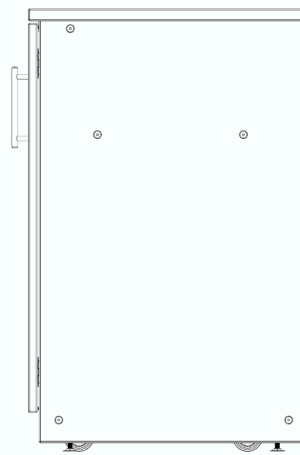


WARRANTY

10 Year Limited

CERTIFICATIONS

UL Greenguard Gold certified



This specification information is provided for general reference only and is subject to change without notice. While every effort has been made to ensure accuracy, Marco makes no warranties, express or implied, regarding the completeness or correctness of the details presented. Users should always verify specifications with the latest product documentation before making any purchasing decisions.

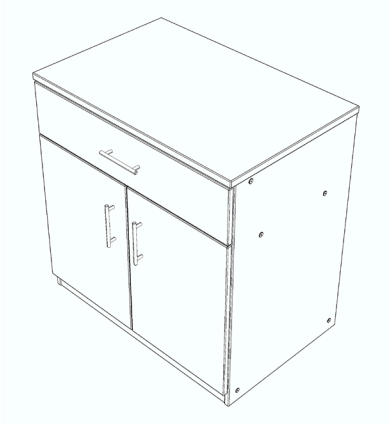


MARCO™

Specification Sheet

MOBILE CASEGOODS

Base Door/Drawer Cabinet (Model 3302)

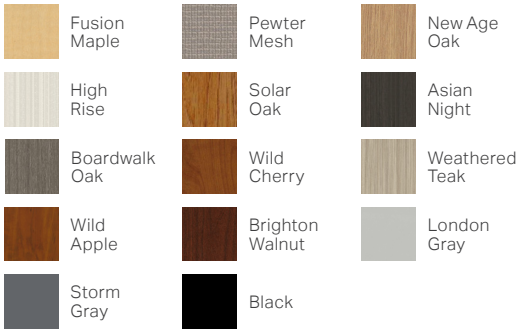


CONSTRUCTION

- Cabinet constructed of 3/4" particleboard substrate with thermally fused laminate surface on both sides
- 3mm PVC edge banding
- Concealed casters for cabinet mobility (not available on 84" height cabinets)
- Panels are assembled with bolt-through steel tube construction and mar-block fasteners
- Shelves are 1" thick to reduce risk of sagging
- European style door hinges
- Steel drawer sides with 5/8" bottom
- Modern door pull options with brushed nickel or black powder coat
- Internal levelers for easy installation
- Optional door and drawer locks

FINISHES

LAMINATES



WARRANTY

10 Year Limited

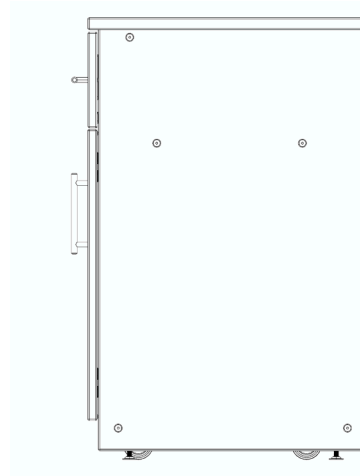
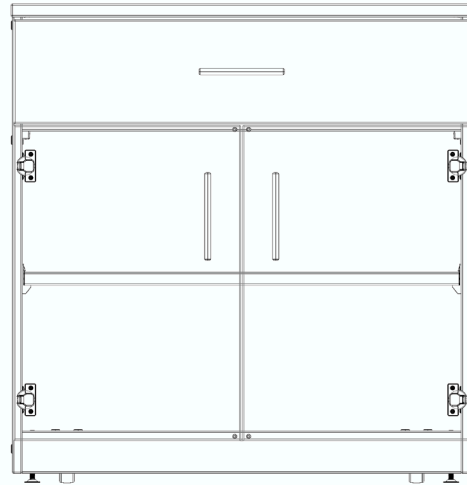
CERTIFICATIONS

UL Greenguard Gold certified

DIMENSIONS

| Model # | Description | W | D | H | WT |
|-----------------|------------------------------|----|----|----|-----|
| 3302-36303-x0xx | NL Doors, 1 Adj Shelf | 36 | 24 | 30 | 135 |
| 3302-36303-x1xx | Locking Doors, 1 Adj Shelf | 36 | 24 | 30 | 135 |
| 3302-36363-x0xx | NL Doors, 2 Adj Shelves | 36 | 24 | 36 | 165 |
| 3302-36363-x1xx | Locking Doors, 2 Adj Shelves | 36 | 24 | 36 | 165 |
| 3302-48303-x0xx | NL Doors, 1 Adj Shelf | 48 | 24 | 30 | 200 |
| 3302-48303-x1xx | Locking Doors, 1 Adj Shelf | 48 | 24 | 30 | 200 |
| 3302-48363-x0xx | NL Doors, 2 Adj Shelves | 48 | 24 | 36 | 215 |
| 3302-48363-x1xx | Locking Doors, 2 Adj Shelves | 48 | 24 | 36 | 215 |

NL = Non-Locking



This specification information is provided for general reference only and is subject to change without notice. While every effort has been made to ensure accuracy, Marco makes no warranties, express or implied, regarding the completeness or correctness of the details presented. Users should always verify specifications with the latest product documentation before making any purchasing decisions.

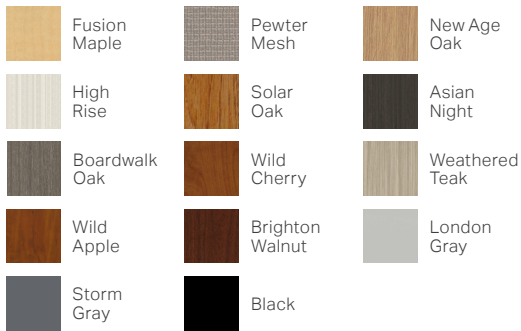


CONSTRUCTION

- Cabinet constructed of 3/4" particleboard substrate with thermally fused laminate surface on both sides
- 3mm PVC edge banding
- Concealed casters for cabinet mobility (not available on 84" height cabinets)
- Panels are assembled with bolt-through steel tube construction and mar-block fasteners
- Shelves are 1" thick to reduce risk of sagging
- European style door hinges
- Steel drawer sides with 5/8" bottom
- Modern door pull options with brushed nickel or black powder coat
- Internal levelers for easy installation
- Optional door and drawer locks

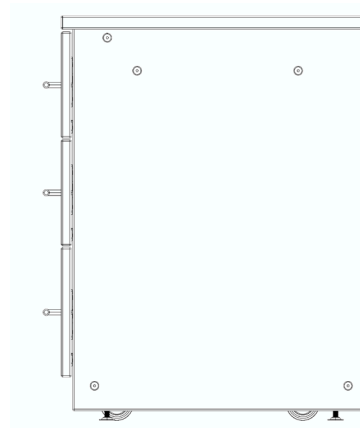
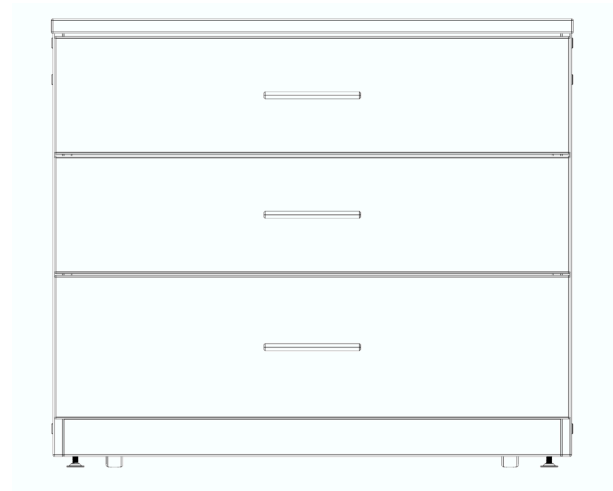
FINISHES

LAMINATES



DIMENSIONS

| Model # | Description | W | D | H | WT |
|-----------------|---------------------------------|----|----|----|-----|
| 3303-36303-x0xx | Base Cabinet, 3 NL Drawers | 36 | 24 | 30 | 180 |
| 3303-36303-x1xx | Base Cabinet, 3 Locking Drawers | 36 | 24 | 30 | 180 |
| 3303-36363-x0xx | Base Cabinet, 4 NL Drawers | 36 | 24 | 36 | 205 |
| 3303-36363-x1xx | Base Cabinet, 4 Locking Drawers | 36 | 24 | 36 | 205 |
| 3303-48303-x0xx | Base Cabinet, 3 NL Drawers | 48 | 24 | 30 | 225 |
| 3303-48303-x1xx | Base Cabinet, 3 Locking Drawers | 48 | 24 | 30 | 225 |
| 3303-48363-x0xx | Base Cabinet, 4 NL Drawers | 48 | 24 | 36 | 260 |
| 3303-48363-x1xx | Base Cabinet, 4 Locking Drawers | 48 | 24 | 36 | 260 |



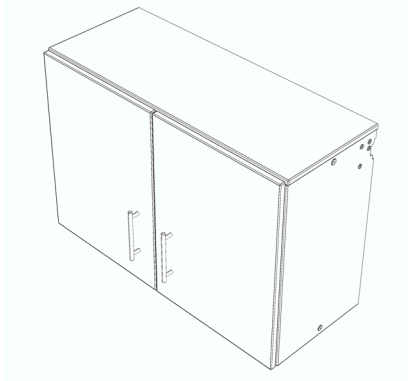
WARRANTY

10 Year Limited

CERTIFICATIONS

UL Greenguard Gold certified

This specification information is provided for general reference only and is subject to change without notice. While every effort has been made to ensure accuracy, Marco makes no warranties, express or implied, regarding the completeness or correctness of the details presented. Users should always verify specifications with the latest product documentation before making any purchasing decisions.



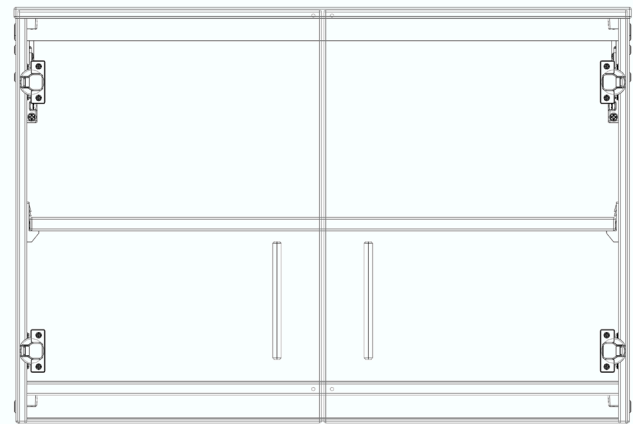
DIMENSIONS

| Model # | Description | W | D | H | WT |
|-----------------|---|----|----|----|-----|
| 3321-36241-x0xx | 2 NL Door, 1 Adj Shelf | 36 | 14 | 24 | 75 |
| 3321-36241-x1xx | 2 Locking Door, 1 Adj Shelf | 36 | 14 | 24 | 75 |
| 3321-36301-x0xx | 2 NL Doors, 2 Adj Shelves | 36 | 14 | 30 | 85 |
| 3321-36301-x1xx | 2 Locking Doors, 2 Adj Shelves | 36 | 14 | 30 | 85 |
| 3322-48241-x0xx | Divider, 2 NL Door, 2 Adj Shelves | 48 | 14 | 24 | 105 |
| 3322-48241-x1xx | Divider, 2 Locking Doors, 2 Adj Shelves | 48 | 14 | 24 | 105 |
| 3322-48301-x0xx | Divider, 2 NL Doors, 4 Adj Shelves | 48 | 14 | 30 | 115 |
| 3322-48301-x1xx | Divider, 2 Locking Doors, 4 Adj Shelves | 48 | 14 | 30 | 115 |

NL = Non-Locking

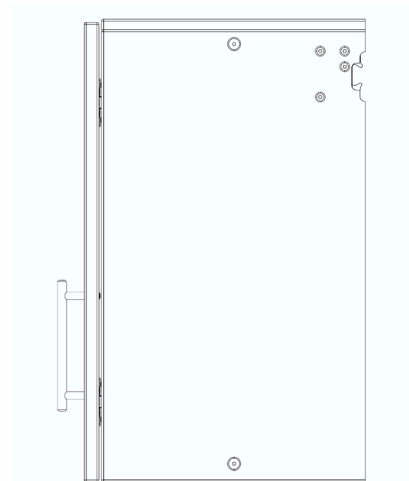
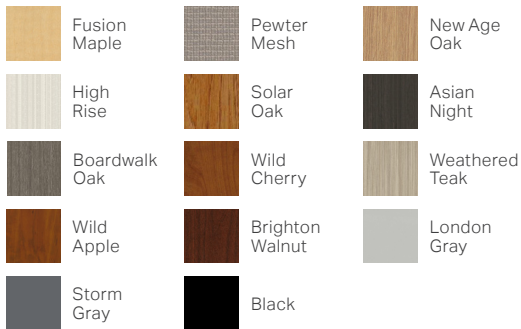
CONSTRUCTION

- Cabinet constructed of 3/4" particleboard substrate with thermally fused laminate surface on both sides
- 3mm PVC edge banding
- Concealed casters for cabinet mobility (not available on 84" height cabinets)
- Panels are assembled with bolt-through steel tube construction and mar-block fasteners
- Shelves are 1" thick to reduce risk of sagging
- European style door hinges
- Steel drawer sides with 5/8" bottom
- Modern door pull options with brushed nickel or black powder coat
- Internal levelers for easy installation
- Optional door and drawer locks



FINISHES

LAMINATES



WARRANTY

10 Year Limited

CERTIFICATIONS

UL Greenguard Gold certified

This specification information is provided for general reference only and is subject to change without notice. While every effort has been made to ensure accuracy, Marco makes no warranties, express or implied, regarding the completeness or correctness of the details presented. Users should always verify specifications with the latest product documentation before making any purchasing decisions.