



GRAVIT8™

STEM / STEAM Table



MARCO™
Environments for Learning



The table where curiosity gets to work.

Designed for the makers, thinkers, and doers, the GRAVIT8 Table brings inventive minds together—whether it’s science experiments, art projects, or hands-on collaboration. With a sturdy 4-leg design and industrial-grade casters, GRAVIT8 is built tough yet moves easily, keeping pace with the flow of every learning environment.

A convenient secondary surface provides space for laptops, notes, or sketching ideas, while the main worktop supports projects of every size. Integrated shelving and organization options keep supplies close at hand and workspaces clutter-free, fully compatible with Marco’s storage solutions.

FEATURES

- Top constructed of 11/8" particleboard with thermally fused melamine surface on both sides
- Thermally fused 3mm PVC edge banding
- 12-gauge steel legs with powder-coat finish
- 16-gauge steel support bars with powder-coat finish
- 5" heavy duty swivel casters

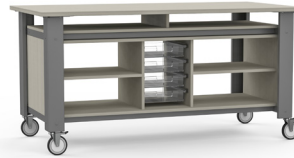
Accessory (sold separately)



Backpack Hook

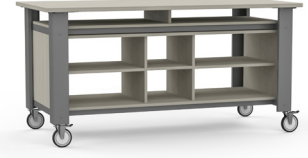


GRAVIT8™ Table Base Model
Model 42A71236



GRAVIT8™ Table (Option 2)
Model 42A71436

Includes additional (4) 3" storage trays with glides, (2) fixed shelves and (2) adjustable shelves.



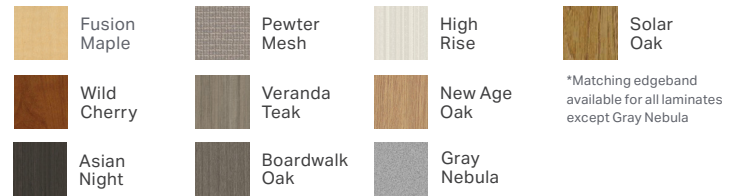
GRAVIT8™ Table (Option 3)
Model 42A71336

Includes additional (3) fixed shelves and (3) adjustable shelves.

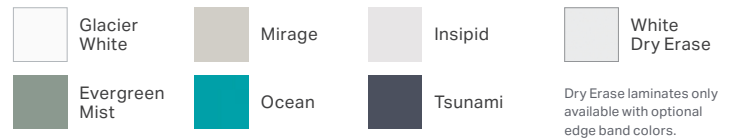
SPECIFICATIONS

WORKSURFACE LAMINATES

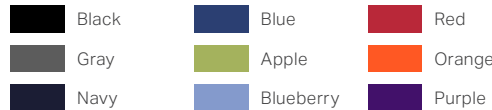
Available with matching or colored edge band



DRY ERASE OPTIONS



OPTIONAL COLOR EDGE BAND



LEG COLOR



BASE CABINET LAMINATES



DIMENSIONS:

Base Model
72"W x 36"D x 36"H
Option 2
72"W x 36"D x 36"H
Option 3
72"W x 36"D x 36"H

WARRANTY:
10 Years

Worksurfaces are UL Greenguard Gold certified.